

PACKAGING & SHIPMENT SPECIFICATIONS

Applicable for the following REC solar panels:

REC Alpha Pure Series
REC TwinPeak 4 Series
REC N-Peak 2 Series

REC Alpha Pure-R Series
REC TwinPeak 5 Series
REC N-Peak 3 Series



CONTENTS

INTRODUCTION.....	3
REC ALPHA PURE SERIES.....	4
REC ALPHA PURE-R SERIES.....	5
REC N-PEAK 2 SERIES*.....	6
REC N-PEAK 3 BLACK SERIES*.....	7
REC TWINPEAK 4 SERIES+.....	8
REC TWINPEAK 5 SERIES+.....	9

*Product only available in the USA

+ Product not available in the USA

INTRODUCTION

REC believes that the packaging of our products is just as important as the product itself. To ensure our solar panels arrive with our customers in as good condition as possible, REC takes every care to ensure a high quality level of packaging and uses international testing standards to ensure the panels reach their destination in the best condition. Except where specifically stated, the information given on the following pages is relevant to all modules in the product family named and is therefore applicable to all product variants, e.g., different colored frames, backsheets, and/or cell types. The images shown are a generic representation of the instructions regardless of color or exact design.

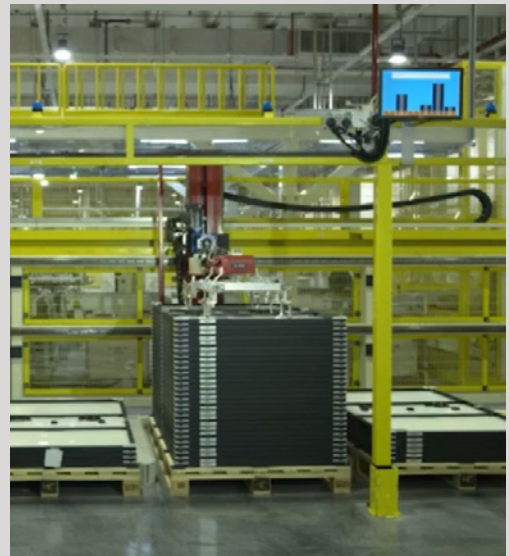


PALLET HANDLING

This document contains instructions concerning the use and handling of pallets of REC solar panels. Following these instructions will ensure that the panels are in the best condition upon arrival at the installation site. Misuse or failure to follow these procedures may lead to damage or injury, and may invalidate the warranty on the product.

QUALITY

REC performs a quality check on all pallets before and during loading. Vehicles will only be loaded if they are deemed safe and serviceable. During transportation, the pallets are stably loaded in protected containers with air bags between them to secure them in position. The freight company and driver are responsible for ensuring suitable load safety for each delivery vehicle. Vehicles without suitable load safety measures will not be loaded. Loading without the use of air bags or loading belts to secure the pallets may lead to damage to the pallet(s) and/or module(s) during transportation which may invalidate the warranty. If using loading belts to secure pallets, ensure these are correctly fitted as over-tightening may cause damage to the modules or pallet(s).

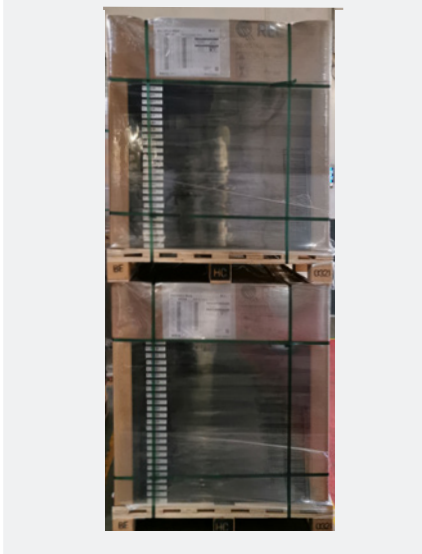


RECYCLING

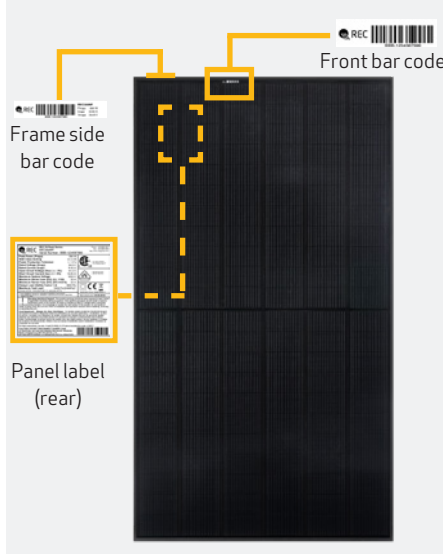
REC makes every effort to ensure the panel packaging is kept to a minimum and that environmentally-friendly materials are used wherever possible. This minimizes waste and discarded items to dispose of at the installation site. The wooden pallets can be re-used or recycled. The paper and cardboard packaging used on REC pallets can be also be widely recycled and the protective wrapping and panel separating blocks are also recyclable in many areas. Please check for all applicable procedures and recycle all packaging and panels according to local guidelines and regulations. REC makes every effort to ensure environmentally-friendly packaging materials are used. Please recycle whenever possible.

REC ALPHA PURE SERIES

PALLET FRONT VIEW (DOUBLE STACKED)



PANEL IDENTIFICATION



PALLET SHIPMENT DIMENSIONS

Length of pallet:	1880 mm (74 in)
Width of pallet:	1055 mm (41.5 in)
Height of single pallet stack:	1205 mm (47.5 in)
Height of double pallet stack:	2410 mm (95 in)
Pallet weight:	41 kg (90.4 lbs)
Stack weight (pallet + panels):	ca. 735 kg (1620 lbs)

DELIVERY INFORMATION

Panels per pallet:	33
Panels per 40 ft GP/high cube container:	792 (24 pallets)
Panels per 13.6 m truck:	924 (28 pallets)
Panels per 53 ft truck:	891 (27 pallets)

PALLET SIDE VIEW (DOUBLE STACKED)



PALLET STACKING



DELIVERY DOCUMENTATION

Documentation is located on short side of pallet. Pallet documentation includes:

- Module flash data
- Serial number
- Product name
- Watt class

PACKAGING MATERIAL

Pallet:	Wood
Foam pad:	Polyurethane Polyether Polyol
Top cover:	Corrugated cardboard
Edge protectors:	Core board - Kraft
Corner pieces and spacers:	HDPE

PACKAGING DOCUMENTATION

REC395AA Pure

Parts: **6002462**

Pallet No: **L3394796_AAAA**

REC

No.	Serial	Imp[A]	Prog[W]	No.	Serial	Imp[A]	Prog[W]
1	4008721147	9.587	396.8	18	4008720961	9.588	395.9
2	4008721051	9.563	396.8	19	4008721071	9.594	396.8
3	4008720948	9.576	397.6	20	4008721044	9.598	396.7
4	4008721168	9.582	396.7	21	4008721043	9.578	397.8
5	4008720969	9.586	396.1	22	4008721042	9.572	395.9
6	4008721128	9.590	399.8	23	4008721036	9.592	399.8
7	4008721171	9.566	396.7	24	4008720928	9.576	397.3
8	4008721014	9.589	396.1	25	4008721063	9.611	397.6
9	4008721078	9.580	397.2	26	4008721049	9.568	395.6
10	4008721114	9.578	396.6	27	4008721033	9.559	395.9
11	4008720943	9.584	396.4	28	4008721040	9.571	396.1
12	4008721084	9.580	396.1	29	4008721166	9.586	395.1
13	4008721088	9.594	396.3	30	4008721048	9.598	397.4
14	4008721072	9.579	396.2	31	4008720908	9.569	395.3
15	4008721075	9.593	396.7	32	4008720956	9.566	395.8
16	4008721087	9.593	397.8	33	4008720956	9.588	395.3
17	4008721064	9.563	396.1				

Attention!

Weight: 735 kg (1620 lbs)

Improper handling will damage the content

Vorsicht!

Gewicht: 735 kg (1620 lbs)

Unsachgemäßer Transport führt zur Beschädigung der Ware

Quality Stamp

QUALITY

17/06/2021 10:43

ACCEPTED

Panel Handling

Attention

Wear clean gloves

Installation instructions:
Installationsanleitungen:
Guides d'emploi:
20.02.2019

www.recgroup.com/downloads

Made in Singapore

STORAGE AND TRANSPORTATION

Stacking for storage:	2 pallets max
Stacking for transportation:	2 pallets max

Note: When double stacking pallets, ensure the upper pallet sits securely on the edge protector to avoid damage to the lower pallet during transportation or handling

Note: Pallets delivered stacked are not bound together

MINIMUM FORK LENGTHS FOR TRANSPORTATION

		Single/Double stack only
Forklift	Long side	1.2 m (47 in)
	Short side	1.5 m (59 in)
Pallet jack	Long side	X
	Short side	1.5 m (59 in)

Note: Forks must be spaced a minimum of 500 mm apart
Handlers must ensure that vehicles used for REC pallets can handle the specified load safely.

Note: Specifications subject to change without notice

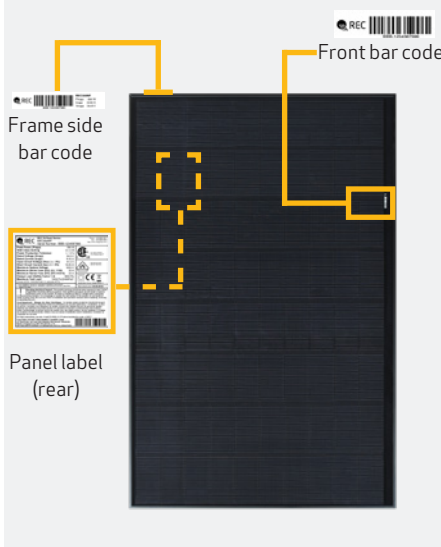
- Pallet No. 1 is the top module in a stack
- Pallet No. 33 is the lowest module in a stack
- Pallet documentation shows:
 - Module serial number
 - Module bar code
 - Manufacturing date
 - Electrical data (I_{MP}, P_{MP})

REC ALPHA PURE-R SERIES

PALLET FRONT VIEW (DOUBLE STACKED)



PANEL IDENTIFICATION



PALLET SHIPMENT DIMENSIONS

Length of pallet:	1780 mm (70 in)
Width of pallet:	1150 mm (45.2 in)
Height of single pallet stack:	1220 mm (48 in)
Height of double pallet stack:	2440 mm (96 in)
Pallet weight:	39 kg (86 lbs)
Stack weight (pallet + panels):	ca. 753 kg (1660 lbs)

DELIVERY INFORMATION

Panels per pallet:	33
Panels per 40 ft GP/high cube container:	858 (26 pallets)
Panels per 13.6 m truck:	924 (28 pallets)
Panels per 53 ft truck:	858 (26 pallets)

PALLET SIDE VIEW (DOUBLE STACKED)



PALLET STACKING



DELIVERY DOCUMENTATION

Documentation is located on short side of pallet. Pallet documentation includes:

- Module flash data
- Serial number
- Product name
- Watt class

PACKAGING MATERIAL

Pallet:	Wood
Foam pad:	Polyurethane Polyether Polyol
Top cover:	Corrugated cardboard
Edge protectors:	Core board - Kraft
Corner pieces and spacers:	HDPE

PACKAGING DOCUMENTATION

REC410AA Pure-R REC

Part: **6002462** Pallet No: **L3394796_AAAA**

No.	Serial	Impj(A)	Pmpj(W)	No.	Serial Number	Impj(A)	Pmpj(W)
1)	4008721047	9.587	396.8	18)	4008720961	9.588	395.9
2)	4008721050	9.583	396.8	19)	4008721071	9.594	396.8
3)	4008720948	9.576	397.6	20)	4008721041	9.599	396.7
4)	4008721018	9.582	396.7	21)	4008721049	9.578	397.0
5)	4008720969	9.586	396.1	22)	4008721042	9.572	395.9
6)	4008721028	9.586	396.8	23)	4008721034	9.592	398.8
7)	4008721171	9.586	396.7	24)	4008720928	9.576	397.2
8)	4008721014	9.589	396.1	25)	4008721083	9.611	397.6
9)	4008721078	9.589	397.2	26)	4008721049	9.588	396.4
10)	4008721114	9.578	396.6	27)	4008721033	9.589	395.9
11)	4008720943	9.584	396.4	28)	4008721040	9.571	396.1
12)	4008721084	9.580	396.1	29)	4008721016	9.586	396.1
13)	4008721088	9.584	396.3	30)	4008721048	9.596	397.4
14)	4008721072	9.579	396.2	31)	4008720938	9.589	395.8
15)	4008721075	9.593	396.7	32)	4008720956	9.566	395.8
16)	4008721087	9.592	397.0	33)	4008720992	9.588	395.3
17)	4008721064	9.563	396.1				

Attention / Vorsicht

Weight: 753 kg (1660 lbs) / Gewicht: 753 kg (1660 lbs)

Improper handling will damage the content / Unsachgemäßer Transport führt zur Beschädigung der Ware

Quality Stamp / Panel Handling

QUALITY 17/06/2021 10:43 ACCEPTED

Attention Wear clean gloves

Installation instructions: Installationsanleitung / Guides d'emploi: 安装说明书

www.enrgroup.com/usa/usa

- Pallet No. 1 is the top module in a stack
- Pallet No. 33 is the lowest module in a stack
- Pallet documentation shows:
 - Module serial number
 - Module bar code
 - Manufacturing date
 - Electrical data (I_{MP}, P_{MP})

STORAGE AND TRANSPORTATION

Stacking for storage:	2 pallets max
Stacking for transportation:	2 pallets max

Note: When double stacking pallets, ensure the upper pallet sits securely on the edge protector to avoid damage to the lower pallet during transportation or handling

Note: Pallets delivered stacked are not bound together

MINIMUM FORK LENGTHS FOR TRANSPORTATION

		Single/Double stack only
Forklift	Long side	1.2 m (47 in)
	Short side	1.5 m (59 in)
Pallet jack	Long side	X
	Short side	1.5 m (59 in)

Note: Forks must be spaced a minimum of 500 mm apart. Handlers must ensure that vehicles used for REC pallets can handle the specified load safely.

Note: Specifications subject to change without notice

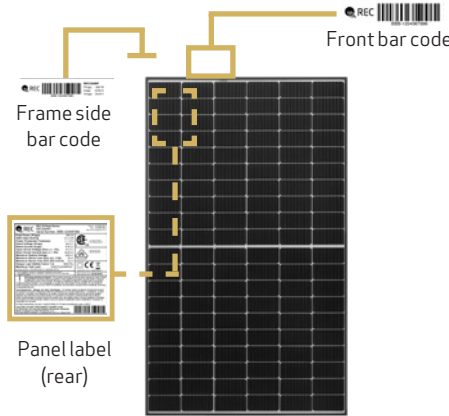
REC N-PEAK 2 SERIES (ONLY AVAILABLE IN THE USA)

These packaging specifications are applicable to the following products:
 REC N-Peak 2 Series REC N-Peak 2 Black Series

PALLET FRONT VIEW (DOUBLE STACKED)



PANEL IDENTIFICATION



PALLET SHIPMENT DIMENSIONS

Length of pallet:	1800 mm (71 in)
Width of pallet:	1080 mm (42.5 in)
Height of single pallet stack:	1225 mm (48 in)
Height of double pallet stack:	2450 mm (96 in)
Pallet weight:	44 kg (93 lbs)
Stack weight (pallet + panels):	ca. 705 kg (1554 lbs)

DELIVERY INFORMATION

Panels per pallet:	33
Panels per GP/high cube container (40 ft):	858 (26 pallets)
Panels per 13.6 m truck:	924 (28 pallets)
Panels per 53 ft truck:	924 (28 pallets)

DELIVERY DOCUMENTATION

Documentation is located on short side of pallet.
 Pallet documentation includes:

- Module flash data
- Serial number
- Product name
- Watt class

PACKAGING MATERIAL

Pallet:	Wood
Foam pad:	Polyurethane Polyether Polyol
Top cover:	Corrugated cardboard
Edge protectors:	Coreboard - Kraft
Corner pieces and spacers:	HDPE

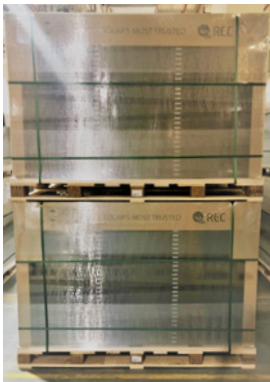
STORAGE AND TRANSPORTATION

Stacking for storage:	2 pallets max
Stacking for transportation:	2 pallets max

Note: When double stacking pallets, ensure the upper pallet sits securely on the edge protector to avoid damage to the lower pallet during transportation or handling

Note: Pallets delivered stacked are not bound together.

PALLET SIDE VIEW (DOUBLE STACKED)



PALLET STACKING



PACKAGING DOCUMENTATION

REC365NP2

Part: **Top 6002511**

Pallet No: **L1293500_AAAA**

No. Serial	Imp(A)	Prog(W)	No. Serial Number	Imp(A)	Prog(W)
1) 208922289	18.71	366.3	18) 208922266	18.67	365.9
2) 208922268	18.68	366.7	19) 208922263	18.70	367.8
3) 208922278	18.72	368.7	20) 208922269	18.69	366.1
4) 208922266	18.72	368.3	21) 208922268	18.68	365.9
5) 208922260	18.74	366.9	22) 208922268	18.70	367.8
6) 208922284	18.74	368.1	23) 208922287	18.70	368.2
7) 208922268	18.70	366.3	24) 208922263	18.71	367.9
8) 208922269	18.71	366.4	25) 208922285	18.71	367.6
9) 208922267	18.72	366.9	26) 208922282	18.71	368.8
10) 208922284	18.73	368.7	27) 208922286	18.70	368.2
11) 208922290	18.70	366.5	28) 208922284	18.71	368.3
12) 208922265	18.68	366.3	29) 208922285	18.69	367.8
13) 208922265	18.69	366.7	30) 208922283	18.73	369.9
14) 208922267	18.67	366.2	31) 208922274	18.69	367.9
15) 208922282	18.71	369.8	32) 208922283	18.69	366.8
16) 208922262	18.68	366.8	33) 208922277	18.73	368.9
17) 208922290	18.65	365.3			

Modules: 33

Bottom

Installation instructions:
 Installationsanleitungen:
 Guides d'emploi:
 設置説明書:
www.enrmp.com/downloads

Made in Singapore

MINIMUM FORK LENGTHS FOR TRANSPORTATION

		Single/Double stack only
Forklift	Long side	1.2 m (47 in) Loading & unloading of container only
	Short side	1.5 m (59 in)
Pallet jack	Long side	X
	Short side	1.5 m (59 in)

Note: Forks must be spaced a minimum of 500 mm apart
 Handlers must ensure that vehicles used for REC pallets can handle the specified load safely.

Note: Specifications subject to change without notice

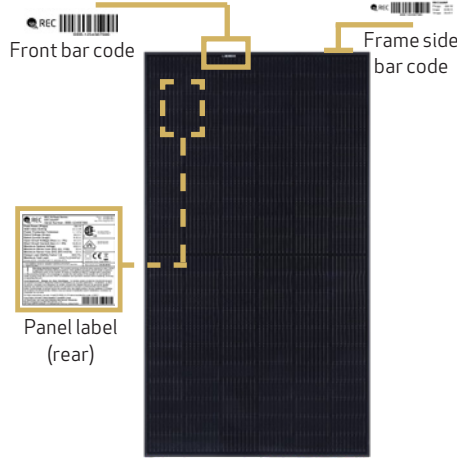
- Pallet No. 1 is the top module in a stack
- Pallet No. 33 is the lowest module in a stack
- Pallet documentation shows:
 - Module serial number
 - Module bar code
 - Manufacturing date
 - Electrical data (I_{MP}, P_{MP})

REC N-PEAK 3 BLACK SERIES (ONLY AVAILABLE IN THE USA)

PALLET FRONT VIEW (DOUBLE STACKED)



PANEL IDENTIFICATION



PALLET SHIPMENT DIMENSIONS

Length of pallet:	76.7 in
Width of pallet:	43 in
Height of single pallet stack:	47.5 in
Height of double pallet stack:	95 in
Pallet weight:	88.2 lbs
Stack weight (pallet + panels):	ca. 1660 lbs

DELIVERY INFORMATION

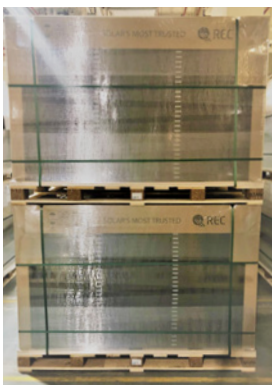
Panels per pallet:	33
Panels per GP/high cube container (40 ft):	792 (24 pallets)
Panels per 53 ft truck:	924 (28 pallets)

DELIVERY DOCUMENTATION

Documentation is located on short side of pallet.
Pallet documentation includes:

- Module flash data
- Serial number
- Product name
- Watt class

PALLET SIDE VIEW (DOUBLE STACKED)



PALLET STACKING



PACKAGING MATERIAL

Pallet:	Wood
Foam pad:	Polyurethane Polyether Polyol
Top cover:	Corrugated cardboard
Edge protectors:	Coreboard - Kraft
Corner pieces and spacers:	HDPE

STORAGE AND TRANSPORTATION

Stacking for storage:	2 pallets max
Stacking for transportation:	2 pallets max

Note: When double stacking pallets, ensure the upper pallet sits securely on the edge protector to avoid damage to the lower pallet during transportation or handling.

Note: Pallets delivered stacked are not bound together.

PACKAGING DOCUMENTATION

RECXXXNP3 Black

Part: **Top 500000** Pallet No: **L1234567_AAAA**

No. Serial	Imp[1]	Imp[2]	No. Serial	Imp[1]	Imp[2]
1)	9.890	002.9	30)	9.790	004.4
2)	9.760	004.6	31)	9.660	002.8
3)	9.762	003.9	32)	9.729	002.9
4)	9.759	003.2	33)	9.689	003.2
5)	9.742	004.1	34)	9.674	003.9
6)	9.729	002.9	35)	9.708	004.9
7)	9.686	003.7	36)	9.746	004.9
8)	9.761	004.9	37)	9.664	002.4
9)	9.686	003.2	38)	9.708	004.9
10)	9.687	003.4	39)	9.689	001.7
11)	9.660	002.9	40)	9.742	002.2
12)	9.686	004.9	41)	9.645	001.2
13)	9.689	003.4	42)	9.671	002.9
14)	9.648	002.7	43)	9.683	001.9
15)	9.648	002.7	44)	9.754	003.9
16)	9.686	002.9	45)	9.686	002.1
17)	9.667	003.9			

Bottom

Modules: 33

Attention! Vorarbeit

Inguppen handling will damage the content!

Umschopfen! Transport fiktiv und Beschädigung der Ware!

Quality Stamp Panel Handling

QUALITY 18/07/2017 8:43 ACCEPTED

Wear clean gloves

Made in Singapore

MINIMUM FORK LENGTHS FOR TRANSPORTATION

		Single/Double stack only
Forklift	Long side	47 in Loading & unloading of container only
	Short side	59 in
Pallet jack	Long side	X
	Short side	59 in

Note: Forks must be spaced a minimum of 20 in apart
Handlers must ensure that vehicles used for REC pallets can handle the specified load safely.

Note: Specifications subject to change without notice

- Pallet No. 1 is the top module in a stack
- Pallet No. 33 is the lowest module in a stack
- Pallet documentation shows:
 - Module serial number
 - Module bar code
 - Manufacturing date
 - Electrical data (I_{MP}, P_{MP})

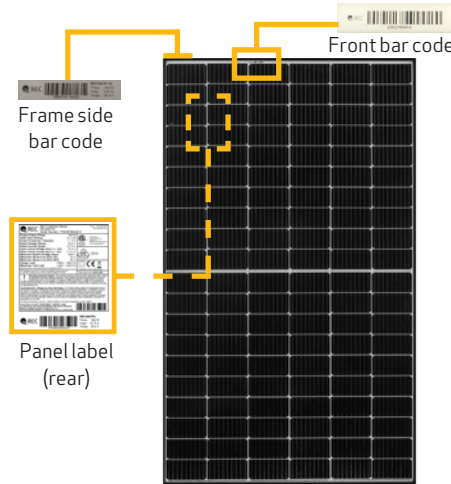
REC TWINPEAK 4 SERIES (NOT AVAILABLE IN THE USA)

These packaging specifications are applicable to the following products:
 REC TwinPeak 4 Series REC TwinPeak 4 Black Series

PALLET FRONT VIEW (DOUBLE STACKED)



PANEL IDENTIFICATION



PALLET SHIPMENT DIMENSIONS

Length of pallet:	1800 mm (71 in)
Width of pallet:	1080 mm (42.5 in)
Height of single pallet stack:	1225 mm (48 in)
Height of double pallet stack:	2450 mm (96 in)
Pallet weight:	44 kg (93 lbs)
Stack weight (pallet + panels):	ca. 705 kg (1554 lbs)

DELIVERY INFORMATION

Panels per pallet:	33
Panels per GP/high cube container (40 ft):	858 (26 pallets)
Panels per 13.6 m truck:	924 (28 pallets)
Panels per 53 ft truck:	924 (28 pallets)

DELIVERY DOCUMENTATION

Flash data list:	On short side
Serial number list:	On short side
Product name:	On long side
Watt class:	On long side

PACKAGING MATERIAL

Pallet:	Wood
Foam pad:	Polyurethane Polyether Polyol
Top cover:	Corrugated cardboard
Edge protectors:	Core board - Kraft
Corner pieces and spacers:	HDPE

STORAGE AND TRANSPORTATION

Stacking for storage:	2 pallets max
Stacking for transportation:	2 pallets max

Note: When double stacking pallets, ensure the upper pallet sits securely on the edge protector to avoid damage to the lower pallet during transportation or handling

Note: Pallets delivered stacked are not bound together.

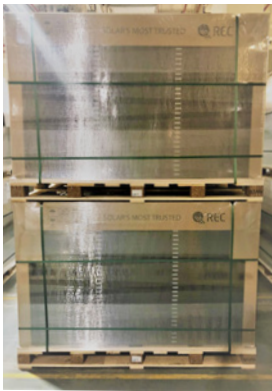
MINIMUM FORK LENGTHS FOR TRANSPORTATION

		Single/Double stack only
Forklift	Long side	1.2 m (47 in)
	Short side	1.5 m (59 in)
Pallet jack	Long side	X
	Short side	1.5 m (59 in)

Note: Forks must be spaced a minimum of 500 mm apart
 Handlers must ensure that vehicles used for REC pallets can handle the specified load safely.

Note: Specifications subject to change without notice

PALLET SIDE VIEW (DOUBLE STACKED)



PALLET STACKING



PACKAGING DOCUMENTATION

REC365TP4 Black

Part No: **Top 6002362** Pallet No: L2336113_AAAA

No.	Serial	Imp[A]	Prp[W]	No.	Serial	Imp[A]	Prp[W]
1)	309968596	19.63	366.7	18)	309968513	19.63	369.2
2)	309968599	19.66	366.7	19)	309968609	19.65	366.2
3)	309968581	19.64	367.3	20)	309968673	19.61	367.6
4)	309968779	19.67	366.6	21)	309968596	19.65	366.1
5)	309968421	19.65	367.6	22)	309968993	19.59	367.1
6)	309968582	19.65	368.3	23)	309968902	19.68	366.2
7)	309968745	19.66	366.1	24)	309968758	19.64	365.8
8)	309968586	19.65	367.4	25)	309968707	19.61	366.1
9)	309968654	19.66	367.0	26)	309968930	19.66	366.4
10)	309968732	19.64	366.9	27)	309968969	19.65	367.1
11)	309968590	19.65	365.5	28)	309968984	19.64	365.9
12)	309968730	19.66	366.3	29)	309968578	19.65	366.5
13)	309968652	19.63	366.7	30)	309968645	19.64	369.2
14)	309968559	19.67	367.5	31)	309968579	19.65	365.7
15)	309968731	19.62	367.4	32)	309968574	19.63	366.8
16)	309968728	19.63	366.8	33)	309968512	19.64	367.1
17)	309968547	19.62	366.1				

Attention!

Weight: 705 kg (1554 lbs)
 Improper handling will damage the content

Vorsicht!

Gewicht: 705 kg (1554 lbs)
 Unsachgemäßer Transport führt zur Beschädigung der Ware

Quality Stamp

QUALITY
 05/08/2021 14:14
 ACCEPTED

Panel Handling

Attention
 Wear clean gloves

Installation instructions:
 Guides d'emploi:
 02 35 02 05 02
www.recgroup.com/downloads

Made in Singapore

- Pallet No. 1 is the top module in a stack
- Pallet No. 33 is the lowest module in a stack
- Pallet documentation shows:
 - Module serial number
 - Module bar code
 - Manufacturing date
 - Electrical data (I_{MP}, P_{MP})

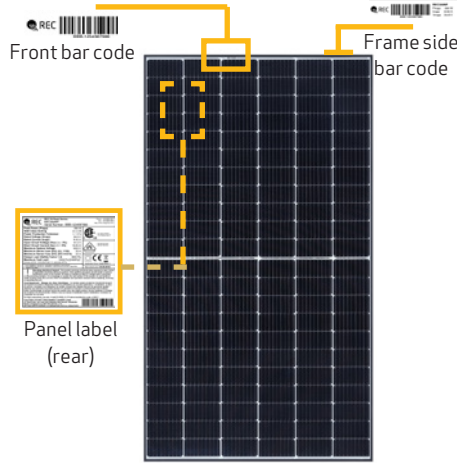
REC TWINPEAK 5 SERIES (NOT AVAILABLE IN THE USA)

These packaging specifications are applicable to the following products:
 REC TwinPeak 5 Series REC TwinPeak 5 Black Series

PALLET FRONT VIEW (DOUBLE STACKED)



PANEL IDENTIFICATION



PALLET SHIPMENT DIMENSIONS

Length of pallet:	1950 mm
Width of pallet:	1090 mm
Height of single pallet stack:	1205 mm
Height of double pallet stack:	2410 mm
Pallet weight:	40 kg
Stack weight (pallet + panels):	ca. 753 kg

DELIVERY INFORMATION

Panels per pallet:	33
Panels per GP/high cube container (40 ft):	792 (24 pallets)
Panels per 13.6 m truck:	924 (28 pallets)
Panels per 53 ft truck:	924 (28 pallets)

DELIVERY DOCUMENTATION

Flash data list:	On short side
Serial number list:	On short side
Product name:	On long side
Watt class:	On long side

PACKAGING MATERIAL

Pallet:	Wood
Foam pad:	Polyurethane Polyether Polyol
Top cover:	Corrugated cardboard
Edge protectors:	Core board - Kraft
Corner pieces and spacers:	HDPE

STORAGE AND TRANSPORTATION

Stacking for storage:	2 pallets max
Stacking for transportation:	2 pallets max

Note: When double stacking pallets, ensure the upper pallet sits securely on the edge protector to avoid damage to the lower pallet during transportation or handling

Note: Pallets delivered stacked are not bound together.

MINIMUM FORK LENGTHS FOR TRANSPORTATION

		Single/Double stack only
Forklift	Long side	1.2 m
	Short side	1.5 m
Pallet jack	Long side	X
	Short side	1.5 m

Note: Forks must be spaced a minimum of 500 mm apart
 Handlers must ensure that vehicles used for REC pallets can handle the specified load safely.

Note: Specifications subject to change without notice

PALLET SIDE VIEW (DOUBLE STACKED)



PALLET STACKING



PACKAGING DOCUMENTATION

RECXXXTP5 Black

Part: **Top 600000** Pallet No: **L1234567_AA**

No.	Serial	Imp(A)	Prog(P)	No.	Serial	Imp(A)	Prog(P)
1	9689	402.9	20	1878543219	9676	402.4	
2	9689	402.9	20	1878543219	9684	402.8	
3	9689	402.9	20	1878543219	9672	402.9	
4	9689	402.9	20	1878543219	9689	402.2	
5	9689	402.9	20	1878543219	9674	402.8	
6	9689	402.9	20	1878543219	9670	402.8	
7	9689	402.9	20	1878543219	9684	402.4	
8	9689	402.9	20	1878543219	9678	402.8	
9	9689	402.9	20	1878543219	9683	402.2	
10	9689	402.9	20	1878543219	9689	402.7	
11	9689	402.9	20	1878543219	9672	402.2	
12	9689	402.9	20	1878543219	9683	402.2	
13	9689	402.9	20	1878543219	9673	402.9	
14	9689	402.9	20	1878543219	9683	402.6	
15	9689	402.9	20	1878543219	9674	402.8	
16	9689	402.9	20	1878543219	9680	402.3	
17	9689	402.9	20	1878543219	9680	402.3	

Modules: 33

Bottom

Made in Singapore

- Pallet No. 1 is the top module in a stack
- Pallet No. 33 is the lowest module in a stack
- Pallet documentation shows:
 - Module serial number
 - Module bar code
 - Manufacturing date
 - Electrical data (I_{MP}, P_{MP})



REC SOLAR PTE. LTD.
20 TUAS SOUTH AVENUE 14
SINGAPORE 637312
SINGAPORE
Tel: +65 6495 9228
Mail: post@recgroup.com

www.recgroup.com