



Product Service

# CERTIFICATE

No. B 18 06 84937 025

**Holder of Certificate:** Canadian Solar Inc.

545 Speedvale Ave West  
Guelph Ontario N1K1E6  
CANADA



**Certification Mark:**



**Product:**

**Converter  
Grid-Tied Inverter**

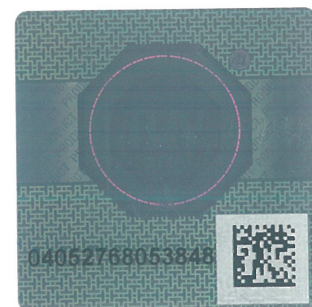
The product was tested on a voluntary basis and complies with the essential requirements. The certification mark shown above can be affixed on the product. It is not permitted to alter the certification mark in any way. In addition the certification holder must not transfer the certificate to third parties. See also notes overleaf.

**Test report no.:** 701261802501-01

**Valid until:** 2023-06-12

**Date,** 2018-06-28

*Zhengdong Ma*  
( Zhengdong Ma )



Page 1 of 3



Product Service

**CERTIFICATE**

**No. B 18 06 84937 025**

**Model(s):** CSI-25KTL-GI-L, CSI-30KTL-GI-L,  
CSI-40KTL-GI-FL, CSI-50KTL-GI,  
CSI-50KTL-GI-HFL, CSI-60KTL-GI-H,  
CSI-60KTL-GI

**Parameters:**

Max. input voltage:	See attachment
MPP voltage range:	See attachment
Max. input current:	See attachment
Isc PV (absolute maximum):	See attachment
Rated grid voltage:	See attachment
Rated grid frequency:	50/60Hz
Max. AC output active power:	See attachment
Max. AC output apparent power:	See attachment
Max. continuous output current:	See attachment
Adjustable cos(Ø):	-0.8...1...+0.8
Protection class:	I
Degree of protection:	IP65
Overvoltage category:	II(PV), III(MAINS)
Ambient temperature:	-25 ... +60°C
Other ratings refer to attachments.	

**Tested according to:** IEC 62109-1(ed.1)  
IEC 62109-2(ed.1)  
EN 62109-1:2010  
EN 62109-2:2011

**Production Facility(ies):** 86470

*Handwritten signature*

**CERTIFICATE**  
**No. B 18 06 84937 025**



Product Service

Electrical ratings for various models:

Models	CSI-25KTL-GI-L	CSI-30KTL-GI-L	CSI-40KTL-GI-FL	CSI-50KTL-GI
<b>PV input ratings:</b>				
Max. input voltage:	d.c. 1100 V	d.c. 1100 V	d.c. 1100 V	d.c. 1100 V
MPP voltage range:	d.c. 200-850V	d.c. 200-850V	d.c. 200-1000V	d.c. 200-1000V
Max. input current:	d.c.2×28.5A	d.c.2×28.5A	d.c. 4×22A	d.c.4×28.5A
Isc PV (absolute maximum):	d.c.2×44.5A	d.c.2×44.5A	d.c.4×34.3A	d.c.4×44.5A
<b>AC output:</b>				
Rated grid voltage:	a.c. 3/PE~ 220V	a.c. 3/PE~ 220V	a.c. 3/N/PE~ 400/230V	a.c. 3/N/PE~ 400/230V
Rated grid frequency:	50/60Hz			
Max. AC output active power:	25000W	30000W	44000W	55000W
Max. AC output apparent power:	25000VA	30000VA	44000VA	55000VA
Max. Continuous output current:	a.c. 65.6 A	a.c. 78.8 A	a.c. 66.9 A	a.c. 83.3 A

Models	CSI-50KTL-GI-HFL	CSI-60KTL-GI-H	CSI-60KTL-GI
<b>PV input ratings:</b>			
Max. input voltage:	d.c. 1100 V	d.c. 1100 V	d.c. 1100 V
MPP voltage range:	d.c. 200-1000V	d.c. 200-1000V	d.c. 200-1000V
Max. input current:	d.c. 4×22A	d.c.4×28.5A	d.c.4×28.5A
Isc PV (absolute maximum):	d.c.4×34.3A	d.c.4×44.5A	d.c.4×44.5A
<b>AC output:</b>			
Rated grid voltage:	a.c. 3/PE~ 480V	a.c. 3/PE~ 480V	a.c. 3/N/PE~ 400/230V
Rated grid frequency:	50/60Hz		
Max. AC output active power:	55000W	66000W	66000W
Max. AC output apparent power:	55000VA	66000VA	66000VA
Max. Continuous output current:	a.c. 66.2 A	a.c. 80 A	a.c. 100 A