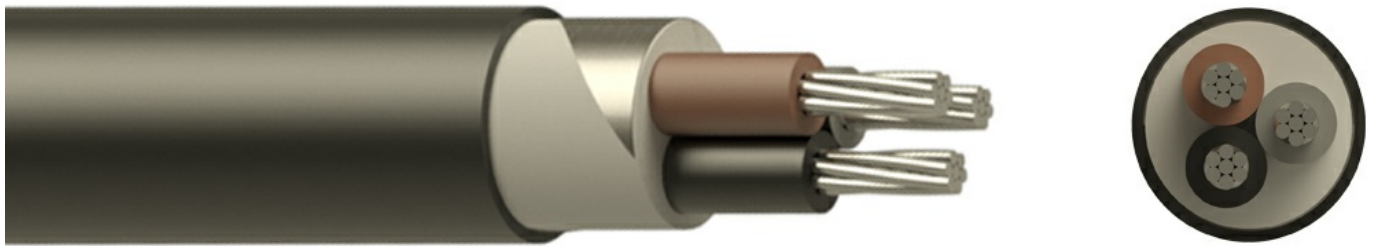


NA2XBY 3x4 CL-2 RM 0.6/1kV



Description

NA2XBY is a cable for indoor and outdoor installation, in cable trays, in ducts or direct buried. It is used for residential or industrial application, in harsh environments where a high level mechanical protection is required.

Core Identification

- 1 core: Black
- 2 core: Blue, Brown
- 3 core: Green/Yellow, Blue, Brown
- 3 core: Brown, Black, Grey
- 4 core: Green/Yellow, Brown, Black, Grey
- 4 core: Brown, Black, Grey, Blue
- 5 core: Green/Yellow, Blue, Brown, Black, Grey
- 6 core and above: Black with White numbers, Green/Yellow

Standards

- IEC 60502-1
- IEC/EN 60228
- VDE 0276-603
- IEC/EN 60332-1-2
- EN 60332-3-24

Construction

- Conductor:** Class 2 stranded aluminium
- Insulation:** XLPE
- Filler:** PVC
- Aarmor:** Galvanized steel tape
- Outer Sheath:** PVC

The above design is only a sample of the options available, for reference purposes only. Our policy of continuous improvement may result in a change of specifications without notice. If any discrepancies might be between the data sheet values and standards, we reserve the rights to make technical changes. Our company will not be held responsible, as all or any of pictures, drawings, weights and dimensions details or other elements in this document are only indicative and must not be considered contractual. Contact our sales team for other specifications or custom made products.

Specifications

| | |
|--|--|
| Cable Type | Multi Core |
| Cable Overall Diameter | 15.3 |
| Cable Weight | 361 |
| Conductor Material | Aluminium |
| Number of Conductors | 3 |
| Conductor Cross-Section | 4 |
| Conductor Weight | 32.5 |
| Conductor Class | CL-2 |
| Conductor Type | RM |
| Aarmor | Steel Tape |
| Insulation Material | XLPE |
| Filling Material | PE |
| Outersheath Material | PVC |
| Rated Voltage (Uo/U) | 0.6/1 |
| Max. Permissible Operating Temperature | -5 >< +90 |
| Working Temperature | -40 >< +90 |
| Short Circuit Temperature | 250 |
| Minimum Bending Radius (Installing) | 15xD |
| Minimum Bending Radius (Operating) | 12xD |
| Packing | Wooden Drum, Plywood Drum, Coil, Rolls |
| Delivery Lengths | To be confirmed by offer |
| Delivery Length Tolerance | ±5% |

The above design is only a sample of the options available, for reference purposes only. Our policy of continuous improvement may result in a change of specifications without notice. If any discrepancies might be between the data sheet values and standards, we reserve the rights to make technical changes. Our company will not be held responsible, as all or any of pictures, drawings, weights and dimensions details or other elements in this document are only indicative and must not be considered contractual. Contact our sales team for other specifications or custom made products.