

 Deutsche
 Qualität
 Garantiert



132

HALF
CELLS

182
mm

CELL
SIZE



LID
RESISTANT



PID
RESISTANT



SALT CORROSION
RESISTANT



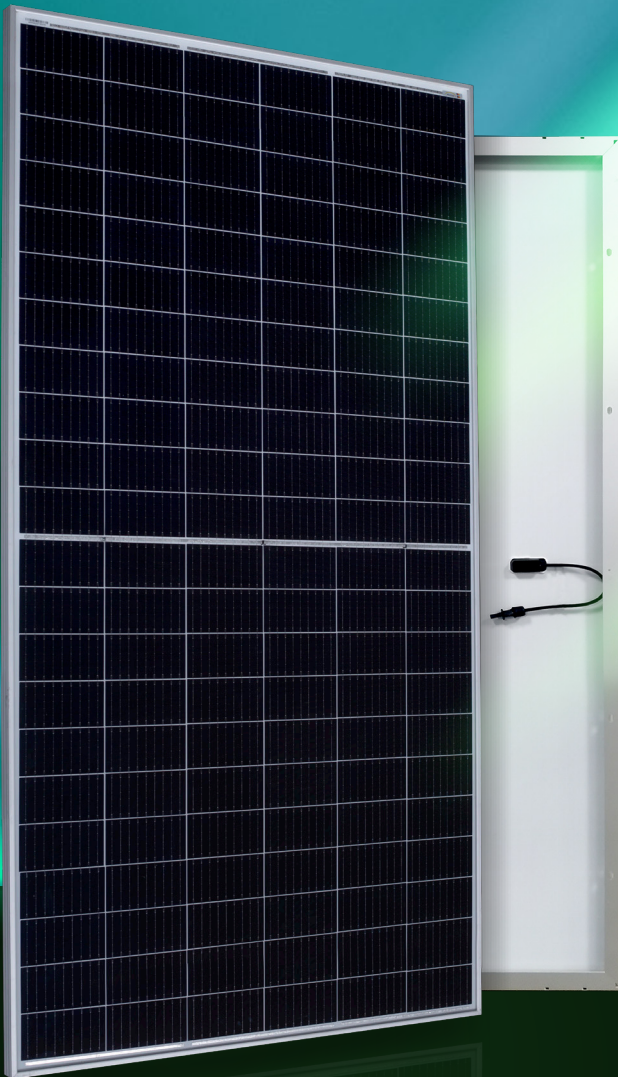
SAND
RESISTANT



AMMONIA
RESISTANT



HIGHLY STABLE
AND TOUGH



AURORA

HIGH ENERGY YIELD
RELIABILITY
DURABILITY

30

years

Performance
Guarantee

15

years

Product
Warranty

MONO-CRYSTALLINE PV MODULES
HALF-CUT CELLS • MONO-FACIAL

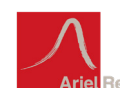
485W-505W

AE MD-132 Series



IEC 61215
IEC 61730
Regular Production Surveillance
Type Tested and Monitored

IEC 62716 (Ammonia corrosion)
IEC 61701 (Salt mist corrosion)
IEC 60068 (Sand and dust)
IEC 62804 (PID resistance)



www.ae-solar.com

Mechanical and design specification

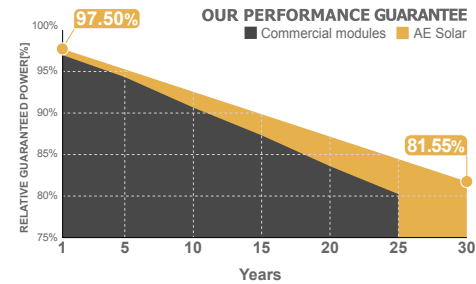
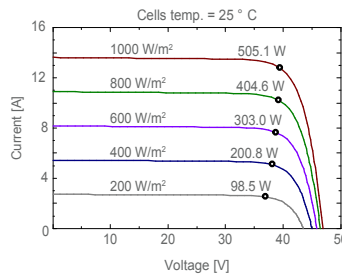
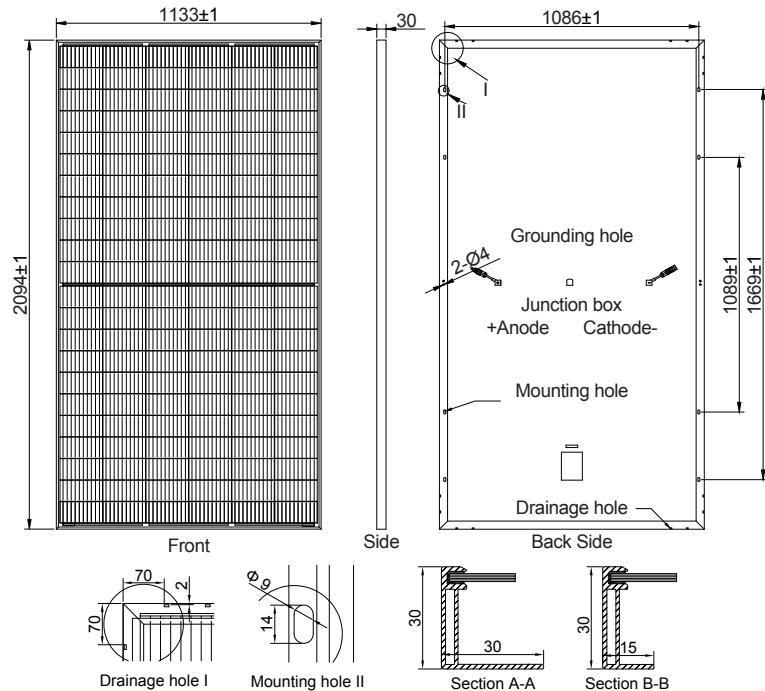
Cell type	Gallium-doped Mono c-Si PERC, Half-cut cells, 182 mm
No. of cells	132
Glass	3.2 mm, high transmission, AR coated, tempered
Encapsulation	EVA
Back cover	White backsheet
Junction box	IP 68 rated
Frame	30 mm anodized Aluminium alloy
Cable	1 x 4 mm ² , 350 mm length or customized
Connectors	MC 4 / MC 4 compatible
Dimension	2094 mm x 1133 mm x 30 mm
Weight	25.5 kg
Hail resistance	Max. Ø 25 mm at 23 m/s
Wind load	2400 Pa/ 244 kg/ m ²
Mechanical load	5400 Pa/ 550 kg/ m ²

Packaging information

Packaging configuration	72 pcs / double pallets
Loading capacity	792 pcs / 40 HQ
Size / Pallet	2125 mm x 1140 mm x 2490 mm
Weight	1914 kg / double pallets

Temperature ratings

Operating temperature (°C)	-40 to +85
Temp.coefficient of P _{max} (%/°C)	-0.35
Temp.coefficient of V _{oc} (%/°C)	-0.275
Temp.coefficient of I _{sc} (%/°C)	0.045
Nom. operating temp. NOCT (°C)	45 ± 2



Electrical specifications (STC*):		AE485MD-132	AE490MD-132	AE495MD-132	AE500MD-132	AE505MD-132
Nominal Max. Power	P _{max} (Wp)	485	490	495	500	505
Maximum operating voltage	V _{MPP} (V)	38.31	38.55	38.79	39.03	39.27
Maximum operating current	I _{MPP} (A)	12.66	12.71	12.76	12.81	12.86
Open-circuit voltage	V _{oc} (V)	45.75	46.05	46.34	46.64	46.93
Short-circuit current	I _{sc} (A)	13.42	13.47	13.52	13.57	13.62
Module efficiency	η (%)	20.44	20.65	20.86	21.07	21.29
Power tolerance	(W)			0~+5		
Maximum system Voltage	(V)			1500		
Maximum series fuse rating	(A)			25		

*STC: Standard test conditions (Irradiance 1000 W/m², Cell temperature 25°C and air mass of AM1.5)

Electrical specifications (NMOT*):		AE485MD-132	AE490MD-132	AE495MD-132	AE500MD-132	AE505MD-132
Nominal Max. Power	P _{max} (Wp)	363	366	370	373	377
Maximum operating voltage	V _{MPP} (V)	35.80	36.00	36.20	36.40	36.60
Maximum operating current	I _{MPP} (A)	10.13	10.17	10.21	10.25	10.29
Open-circuit voltage	V _{oc} (V)	43.00	43.20	43.40	43.60	43.80
Short-circuit current	I _{sc} (A)	10.74	10.78	10.82	10.86	10.90

*NMOT: Normal Module Operating Temperature (Irradiance 800 W/m², Ambient temperature 20°C, air mass of AM1.5 and wind speed of 1 m/s)

The specifications and characteristics contained in this datasheet may deviate slightly from our actual products due to the product developments and uncertainty of measurement devices. The specifications included in the datasheet are subject to change without prior notice.

