

# Harvest the Sunshine

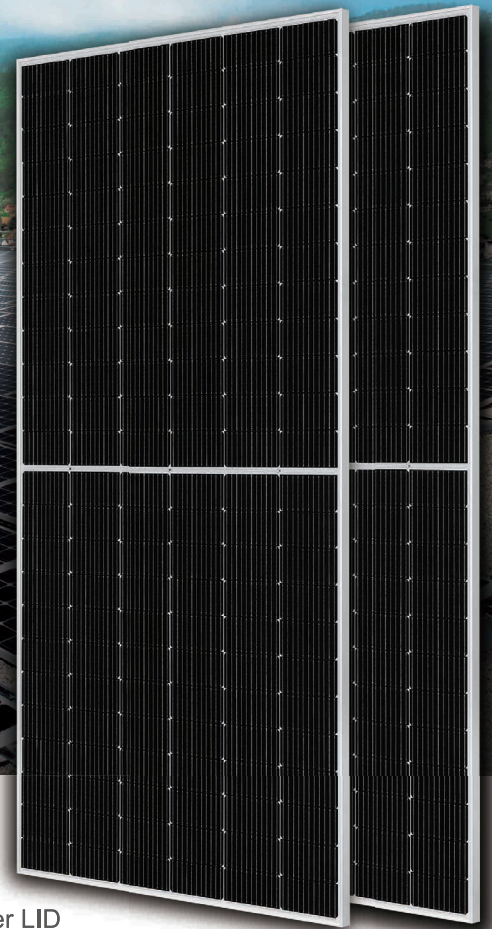
## DEEP BLUE 4.0

**Mono**

580W n-type Bifacial Double Glass  
High Efficiency Mono Module  
JAM72D40 555-580/GB/1500V Series

### Introduction

Power by the latest MBB n-type solar cell, half-cell configuration and gapless ribbon connection technology, these modules have higher output power, lower LID, better weak illumination response, and better temperature coefficient.



Higher power generation  
better LCOE



n-type with very Lower LID



Better weak illumination response



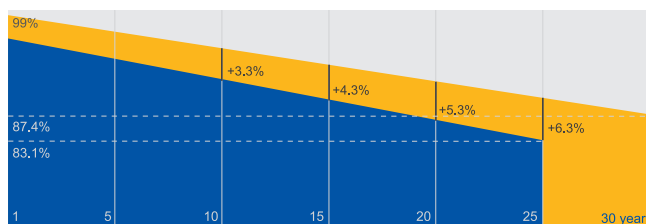
Better Temperature Coefficient

### Superior Warranty

- 12-year product warranty
- 30-year linear power output warranty

1% 1st-year Degradation

0.4% Annual Degradation  
Over 30 years



■ n-type Bifacial Double Glass Module Linear Performance Warranty

■ Standard Module Linear Performance Warranty

### Comprehensive Certificates

- IEC 61215, IEC 61730
- ISO 9001: 2015 Quality management systems
- ISO 14001: 2015 Environmental management systems
- ISO 45001: 2018 Occupational health and safety management systems



**JA SOLAR**

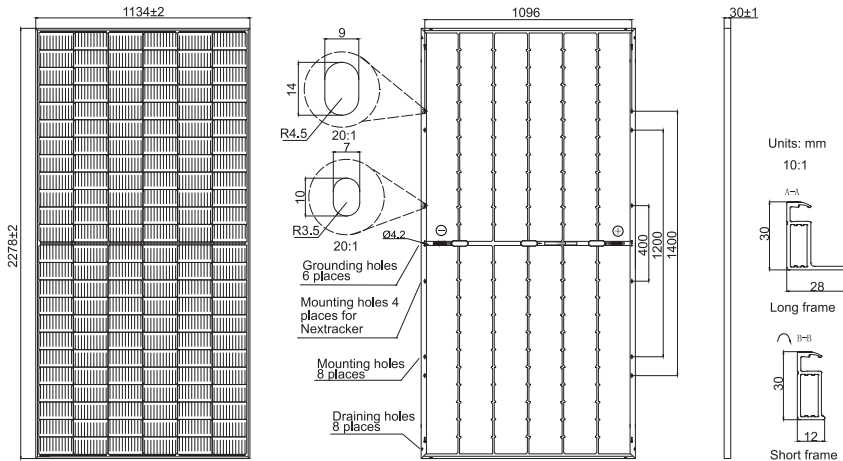
[www.jasolar.com](http://www.jasolar.com)

Specifications subject to technical changes and tests.  
JA Solar reserves the right of final interpretation.

Shanghai JA Solar Technology Co., Ltd.



**MECHANICAL DIAGRAMS**



Remark: customized frame color and cable length available upon request

**SPECIFICATIONS**

Cell	Mono
Weight	31.2kg
Dimensions	2278±2mm×1134±2mm×30±1mm
Cable Cross Section Size	4mm <sup>2</sup> (IEC), 12 AWG(UL)
No. of cells	144(6×24)
Junction Box	IP68, 3 diodes
Connector	Stäubli MC4-EVO2A/MC4-EVO2 QC Solar QC 4.10-351
Cable Length (Including Connector)	Portrait:200mm(+)/300mm(-); Landscape:1300mm(+)/1300mm(-)
Front Glass/Back Glass	2.0mm/2.0mm
Country of Manufacturer	China/Vietnam

**ELECTRICAL PARAMETERS AT STC**

TYPE	JAM72D40-555/GB/1500V	JAM72D40-560/GB/1500V	JAM72D40-565/GB/1500V	JAM72D40-570/GB/1500V	JAM72D40-575/GB/1500V	JAM72D40-580/GB/1500V
Rated Maximum Power(Pmax) [W]	555	560	565	570	575	580
Open Circuit Voltage(Voc) [V]	50.55	50.70	50.85	51.00	51.15	51.30
Maximum Power Voltage(Vmp) [V]	42.24	42.40	42.55	42.70	42.85	43.03
Short Circuit Current(Isc) [A]	14.02	14.09	14.16	14.23	14.30	14.36
Maximum Power Current(Imp) [A]	13.14	13.21	13.28	13.35	13.42	13.48
Module Efficiency [%]	21.5	21.7	21.9	22.1	22.3	22.5
Power Tolerance	0~+5W					
Temperature Coefficient of Isc(α <sub>Isc</sub> )	+0.046%/°C					
Temperature Coefficient of Voc(β <sub>Voc</sub> )	-0.260%/°C					
Temperature Coefficient of Pmax(γ <sub>Pmp</sub> )	-0.300%/°C					
STC	Irradiance 1000W/m <sup>2</sup> , cell temperature 25°C, AM1.5G					

Remark: Electrical data in this catalog do not refer to a single module and they are not part of the offer.They only serve for comparison among different module types.  
Measurement tolerance at STC: Pmax ±3%, Voc ±3% and Isc ±4%.

**ELECTRICAL CHARACTERISTICS WITH 10% SOLAR IRRADIATION RATIO**

TYPE	JAM72D40-555/GB/1500V	JAM72D40-560/GB/1500V	JAM72D40-565/GB/1500V	JAM72D40-570/GB/1500V	JAM72D40-575/GB/1500V	JAM72D40-580/GB/1500V
Rated Max Power(Pmax) [W]	599	605	610	616	621	626
Open Circuit Voltage(Voc) [V]	50.58	50.73	50.88	51.03	51.16	51.30
Max Power Voltage(Vmp) [V]	42.24	42.39	42.55	42.70	42.86	43.02
Short Circuit Current(Isc) [A]	15.14	15.22	15.29	15.37	15.44	15.51
Max Power Current(Imp) [A]	14.19	14.27	14.34	14.42	14.49	14.56
Irradiation Ratio (rear/front)	10%					

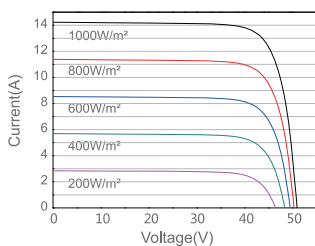
**OPERATING CONDITIONS**

Maximum System Voltage	1500V DC
Operating Temperature	-40°C~+85°C
Maximum Series Fuse Rating	30A
Maximum Static Load,Front* Maximum Static Load,Back*	3600Pa, 1.5 1600Pa, 1.5
NOCT	45±2°C
Bifaciality**	80%±10%
Fire Safety Class	Class C

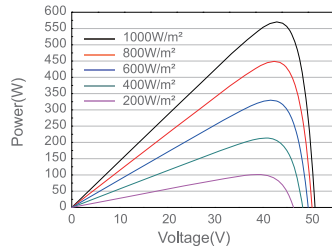
\*For NextTracker Installations, Maximum Static Load Please Take Compatibility Approve Letter Between JA Solar And NextTracker For Reference  
\*\*Bifaciality=Pmax,rear/Rated Pmax,front

**CHARACTERISTICS**

Current-Voltage Curve JAM72D40-570/GB/1500V



Power-Voltage Curve JAM72D40-570/GB/1500V



Current-Voltage Curve JAM72D40-570/GB/1500V

