



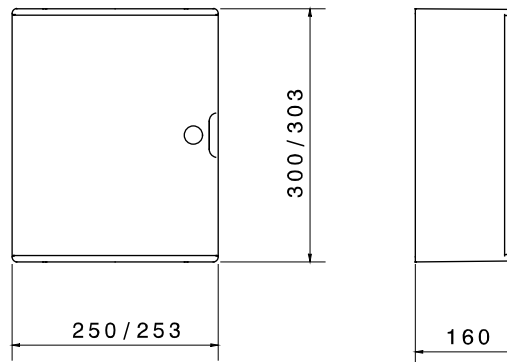
Range of Watertight surface-mounting boards made in polyester material reinforced with fibreglass. In compliance with IEC 61439-1 (CEI 17/113), IEC 61439-2 (CEI 17/114), IEC 60670-1 (CEI 23/48), IEC 60670-24 (CEI 23/49) e IEC 62208 (CEI 17-87). Available in 7 sizes, transparent and black door versions with IP66 protection degree. Fast&Easy accessories, made in metal, allow the installation of modular devices and moulded-case circuit breakers up to 250A into the boards, reducing assembly times by up to 40%. Indicated for automation and distribution for indoor and outdoor applications.

Insulation class	II	Colour	Grey RAL 7035
Nominal dim. LxHxD (mm)	250x300x160	IP degree	IP66
Characteristics	UV resistance (EN 62208)	Material	Polyester reinforced with fibreglass
Mechanical resistance	IK10	No. locks	1
Dispersible power A (W)	34	Dispersible power B (W)	-
Glow Wire Test	960 °C	Functional dim. LxHxD (mm)	253x303x160
Operating temperature	-25 +60 °C	Insulation voltage (Ui)	1000 V
Type of material	Halogen-free in compliance with EN 60754-2	Electrocod	0321
Thermo-pressure with ball	200 °C	Standard	EN 61439-1, EN 61439-2, EN62208, EN 60670-1, IEC 60670-24
Family	46 QP	Maximum rated insulation voltage (Ui)	690 V
Type of door	Blank door	Surface-mounting brackets	GW46446-GW46451
Kit for double insulation restore	GW46526		

#### BEHAVIOUR WITH CHEMICAL AND ATMOSPHERIC AGENTS

Saline solution	Acids		Bases		Solvents				Mineral oil	UV rays
	Concentrated	Diluted	Concentrated	Diluted	Hexane	Benzol	Acetone	Ethyl alcohol		
Resistant	Limited resistance	Limited resistance	Limited resistance	Limited resistance	Limited resistance	Limited resistance	Not resistant	Limited resistance	Resistant	Resistant

#### DIMENSIONAL



#### TECHNICAL SYMBOLOGY



II

IP

IP66



EN 62208  
UV resistance (EN 62208)

IK

IK10

GWT

960 °C

INSTALLATION



-25 +60 °C



Halogen-free in compliance with EN 60754-2



200 °C

#### STANDARDS/APPROVALS

