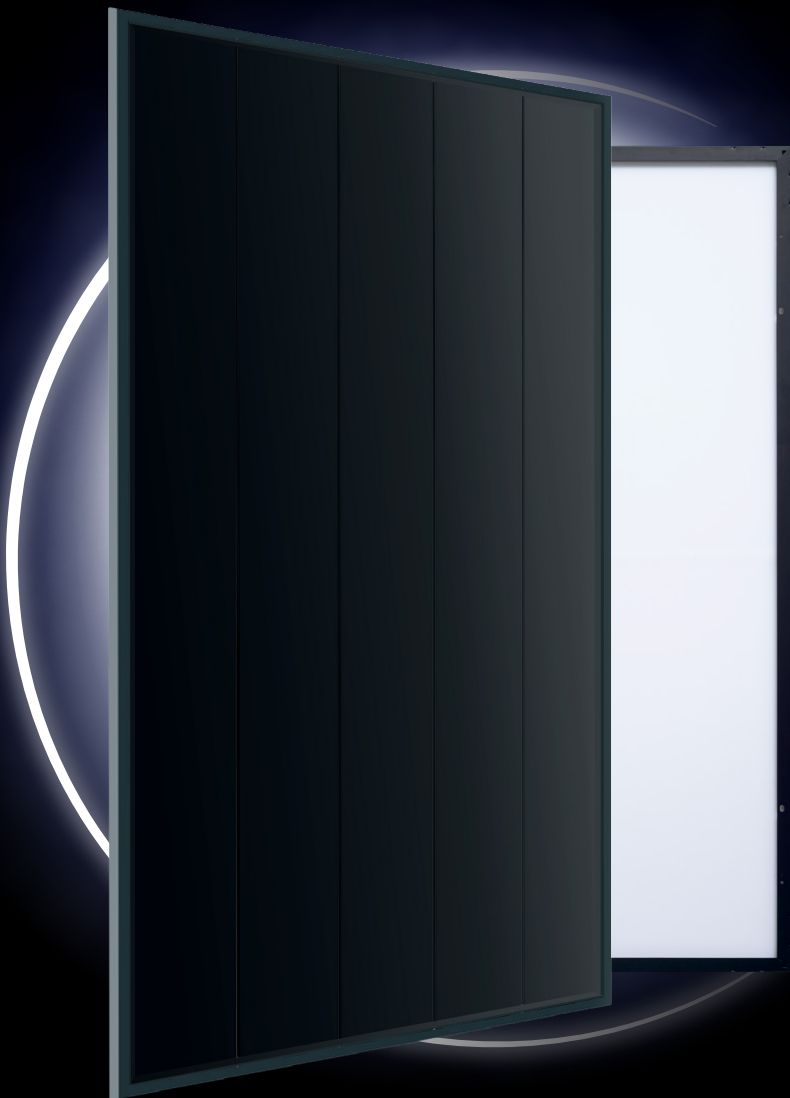


Deutsche
Qualität
Garantiert



ECLIPSE

ULTRA BLACK series

For Elegant Living

30
years
Performance
Guarantee

15
years
Product
Warranty

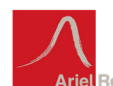
MONO-CRYSTALLINE PV MODULES
SHINGLED TECHNOLOGY • MONO-FACIAL

405W-425W

AE BME-44E Series



IEC 61215
IEC 61730
Regular Production Surveillance
Type Tested and Monitored

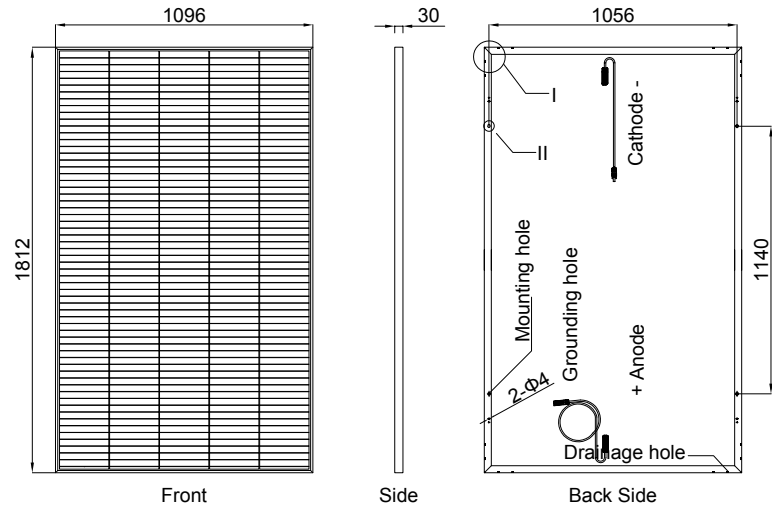


www.ae-solar.com

AE BME-44E Series 405W-425W

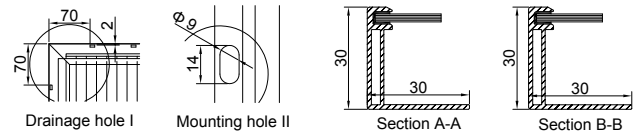
Mechanical and design specification

| | |
|-----------------|--|
| Cell type | Mono c-Si PERC, Shingled cells, 210 mm |
| No. of cells | 305 (61x5) |
| Glass | 3,2 mm, high transmission, AR coated, tempered |
| Encapsulation | EVA |
| Back cover | EVA-side black, rear-side white backsheet |
| Junction box | IP 68 Rated, 2 bypass diodes |
| Frame | 30 mm anodized Aluminium alloy, full black |
| Cable | Anode 300 mm, Cathode 1000 mm or customized |
| Connectors | MC 4 / MC 4 compatible |
| Dimension | 1812 mm x 1096 mm x 30 mm |
| Weight | 20.8 kg |
| Hail resistance | Max. Ø 25 mm at 23 m/s |
| Wind load | 2400 Pa/ 244 kg/ m ² |
| Mechanical load | 5400 Pa/ 550 kg/ m ² |



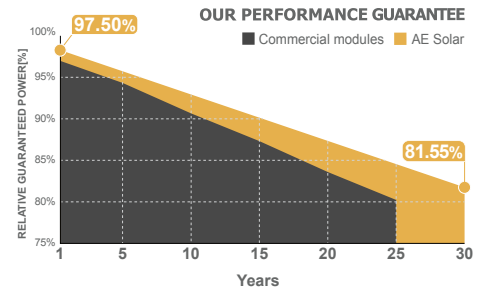
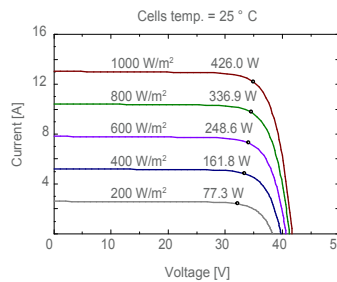
Packaging information

| | |
|-------------------------|---|
| Packaging configuration | 72 pcs / double pallets, 60 pcs / double pallets |
| Loading capacity | 924 pcs / 40 HQ |
| Size / Double pallets | 1826 mm x 1125 mm x 2440 mm (72 pcs) 1826 mm x 938 mm x 2440 mm (60 pcs) |
| Weight | 1548 kg (72 pcs), 1298 kg (60 pcs) |



Temperature ratings

| | |
|---|------------|
| Operating temperature (°C) | -40 to +85 |
| Temp.coefficient of P _{max} (%/°C) | -0.34 |
| Temp.coefficient of V _{oc} (%/°C) | -0.27 |
| Temp.coefficient of I _{sc} (%/°C) | 0.040 |
| Nom. operating temp. NOCT (°C) | 42.3 ± 2 |



| Electrical specifications (STC*): | | AE405BME-44E | AE410BME-44E | AE415BME-44E | AE420BME-44E | AE425BME-44E |
|-----------------------------------|-----------------------|--------------|--------------|--------------|--------------|--------------|
| Nominal Max. Power | P _{max} (Wp) | 405 | 410 | 415 | 420 | 425 |
| Maximum operating voltage | V _{MPP} (V) | 34.3 | 34.4 | 34.4 | 34.5 | 34.6 |
| Maximum operating current | I _{MPP} (A) | 11.86 | 11.97 | 12.08 | 12.19 | 12.30 |
| Open-circuit voltage | V _{oc} (V) | 41.3 | 41.4 | 41.5 | 41.6 | 41.7 |
| Short-circuit current | I _{sc} (A) | 12.53 | 12.65 | 12.80 | 12.92 | 13.03 |
| Module efficiency | η (%) | 20.39 | 20.65 | 20.90 | 21.15 | 21.40 |
| Power tolerance | (W) | 0~+5 | | | | |
| Maximum system Voltage | (V) | 1500 | | | | |
| Maximum series fuse rating | (A) | 25 | | | | |

*STC: Standard test conditions (Irradiance 1000 W/m², Cell temperature 25°C and air mass of AM1.5)

| Electrical specifications (NMOT*): | | AE405BME-44E | AE410BME-44E | AE415BME-44E | AE420BME-44E | AE425BME-44E |
|------------------------------------|-----------------------|--------------|--------------|--------------|--------------|--------------|
| Nominal Max. Power | P _{max} (Wp) | 305 | 309 | 312 | 316 | 320 |
| Maximum operating voltage | V _{MPP} (V) | 32.7 | 32.8 | 32.8 | 32.9 | 33.0 |
| Maximum operating current | I _{MPP} (A) | 9.33 | 9.41 | 9.53 | 9.62 | 9.7 |
| Open-circuit voltage | V _{oc} (V) | 39.4 | 39.5 | 39.6 | 39.7 | 39.8 |
| Short-circuit current | I _{sc} (A) | 10.09 | 10.19 | 10.31 | 10.41 | 10.5 |

*NMOT: Normal Module Operating Temperature (Irradiance 800 W/m², Ambient temperature 20°C, air mass of AM1.5 and wind speed of 1 m/s)

The specifications and characteristics contained in this datasheet may deviate slightly from our actual products due to the product developments and uncertainty of measurement devices. The specifications included in the datasheet are subject to change without prior notice.