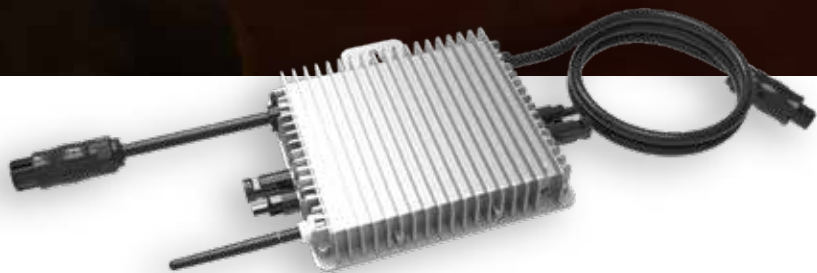
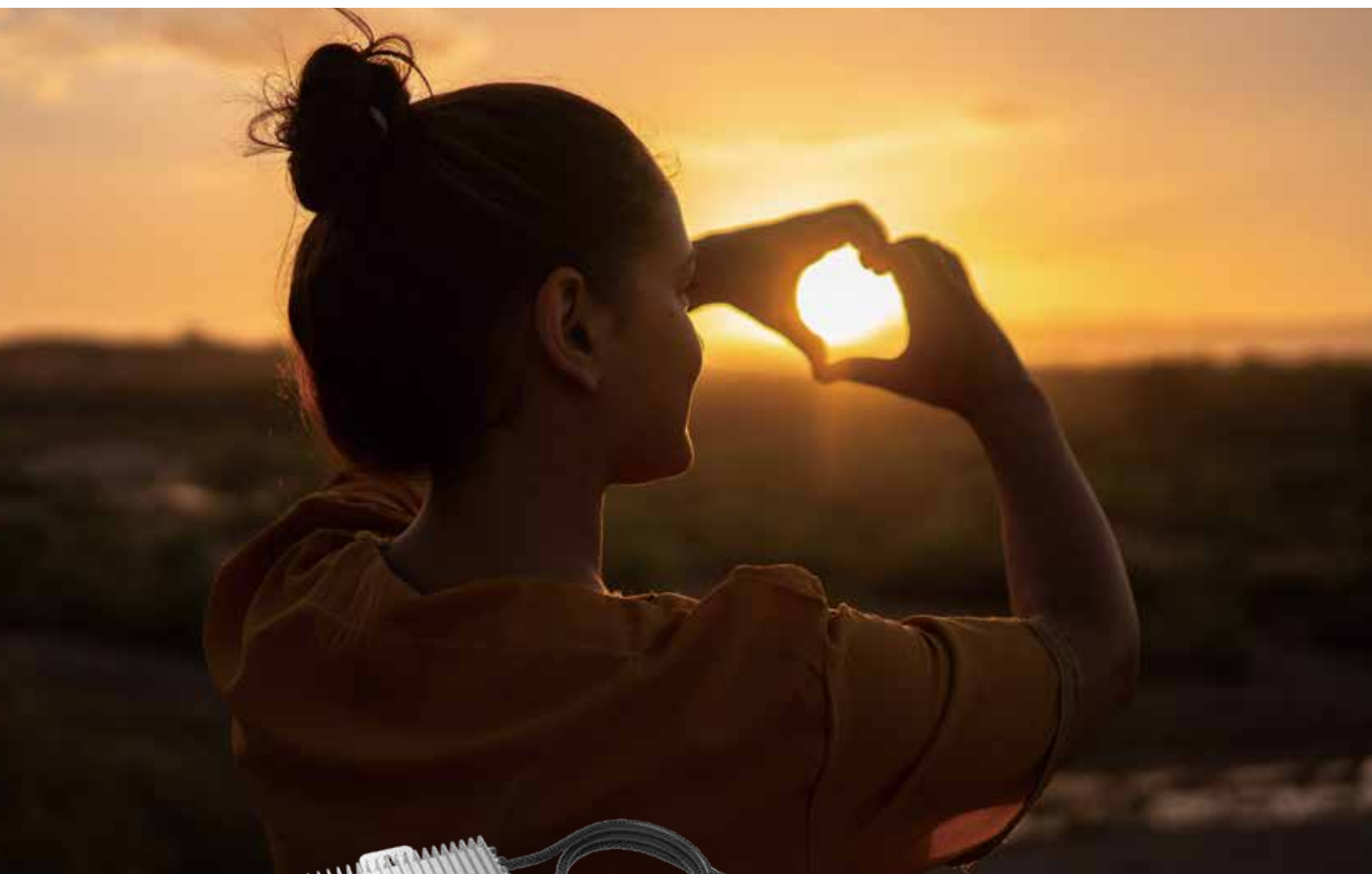


Microinverter

SUN600G3-US-220/EU-230

SUN800G3-US-220/EU-230

SUN1000G3-US-220/EU-230



IP67 protection degree, 10 years warranty



WIFI communication



Support reactive power compensation



2 MPP trackers, module level monitoring



Rapid shutdown function

Deye

Stock Code: 605117.SH

Technical Data

www.deyeinverter.com

Model	SUN600G3 -US-220	SUN600G3 -EU-230	SUN800G3 -US-220	SUN800G3 -EU-230	SUN1000G3 -US-220	SUN1000G3 -EU-230
Input Data (DC)						
Recommended Input Power (STC)	210-420W (2 Pieces)		210-500W (2 Pieces)		210-600W (2 Pieces)	
Maximum Input DC Voltage (V)	60					
MPPT Voltage Range (V)	25-55					
Full Load DC Voltage Range (V)	24.5-55		33-55		40-55	
Max. DC Short Circuit Current (A)	2×19.5					
Max. Input Current (A)	2×13					
No.of MPP Trackers	2					
No.of Strings per MPP Tracker	1					
Output Data (AC)						
Max. Output Apparent Power (VA)	600		800		1000	
Rated Output Power (W)	600		800		1000	
Rated Output Current (A)	2.7	2.6	3.6	3.5	4.5	4.4
Nominal Voltage / Range (this may vary with grid standards)	220V/ 0.85Un-1.1Un	230V/ 0.85Un-1.1Un	220V/ 0.85Un-1.1Un	230V/ 0.85Un-1.1Un	220V/ 0.85Un-1.1Un	230V/ 0.85Un-1.1Un
Nominal Frequency / Range	50 / 60Hz					
Extended Frequency / Range	45-55Hz / 55-65Hz					
Power Factor	>0.99					
Maximum Units per Branch	8		6		5	
Efficiency						
CEC Weighted Efficiency	95%					
Peak Inverter Efficiency	96.5%					
Static MPPT Efficiency	99%					
Night Time Power Consumption	50mW					
Mechanical Data						
Ambient Temperature Range	-40-60°C, >45°C Derating					
Cabinet Size (WxHxD mm)	212×229×40 (Excluding Connectors and Brackets)					
Weight (kg)	3.5					
Cooling	Free Cooling					
Enclosure Environmental Rating	IP67					
Features						
Communication	WIFI					
Grid Connection Standard	VDE4105, IEC61727/62116, VDE0126, AS4777.2, CEI 0 21, EN50549-1, G98, G99, C10-11, UNE217002, NBR16149/NBR16150					
Safety EMC / Standard	UL 1741, IEC62109-1/-2, IEC61000-6-1, IEC61000-6-3, IEC61000-3-2, IEC61000-3-3					
Warranty	10 Years					