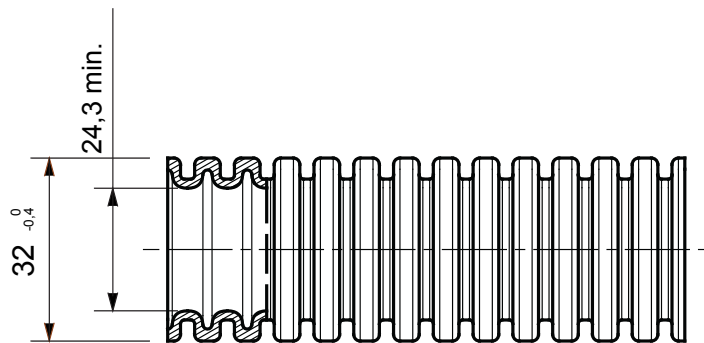
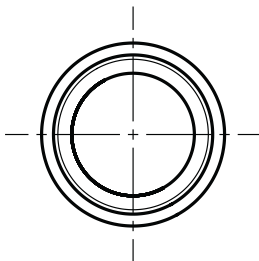




Pliable protective conduit system FKHF range, made of PP: classification 2322, available in seven diameters, from 16 to 63 mm, with or without cable puller. Suitable for electrical system and/or data transmission. Suitable for flush mounting installation in floors, walls and ceilings or buried in concrete. Certified Halogen Free in compliance with EN 60754-2 and Low Smoke in compliance with EN 61034-2. Suitable for applications inside false ceilings and floating floors and installations in public places: schools, cinemas, theatres, underground etc..

Colour	Grey RAL 7035	Material	PP self-extinguishing
Type	with cable puller	Conduits Ø (mm)	32
Type of material	Halogen free in compliance with EN 60754-2 e Low smoke in compliance with EN 61034-2	Resistance to compression	2 (Light - 320 N)
Resistance to impact	3 (Medium - 2 J)	Resistance to bending	2 (Pliable - self recovering)
Electrical characteristics	2 (With electrical insulating characteristics)	Protection against ingress of water	0
Resistance against corrosion	Not applicable to plastic conduit systems	Fire resistance	1 (Non-flame propagating)
Insulation resistance	100 MΩ a 500V for 1 minute	Protection against ingress of solid objects with GF coupling	4
Dielectric rigidity	2000 V a 50 Hz for 15 minutes	Standard	EN 61386-1 EN 61386-22

DIMENSIONAL



TECHNICAL SYMBOLOGY



STANDARDS/APPROVALS

