

UNDERFLOOR OUTLET BOXES

TECHNICAL CHARACTERISTICS

Standard: IEC EN 606070-1 (CEI 23-48); IEC EN 60670-23; IEC EN 60670-24 (CEI 23-49) (*)

Degree of protection: IP52 between the edge of the underfloor box and the floor
IP40 between the lid and the interior of the box
(excluding the exit point of the cables)
IP20 in the point of exit of the cables

Installation temperature: Max +45°C; Min -5°C

Material: GW PLAST technopolymer, halogen-free in accordance with EN 60754-2 (CEI EN 50267-2-2)

Point load resistance: 500N

Distributed load resistance: 1000N

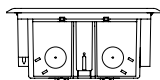
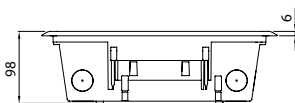
Resistance to abnormal heat and fire: Glow wire test 850°C

Compatibility with wiring devices: SYSTEM range

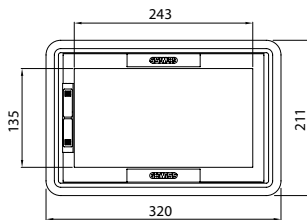
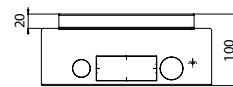
Dimension tables

UNDERFLOOR OUTLET BOXES

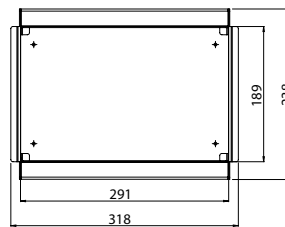
10 modules



10 modules

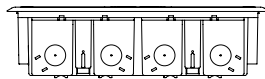
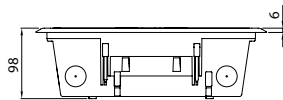


GW 24 601
With hollow lid
GW 24 611
With stainless steel lid

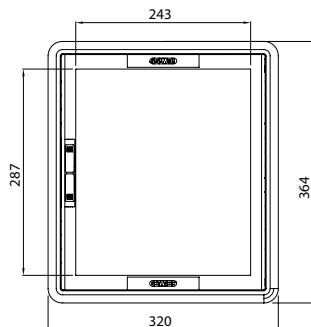
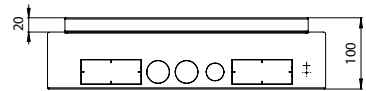
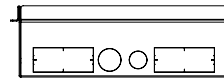


GW 24 621

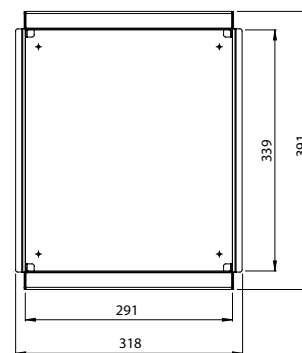
20 modules



20 modules



GW 24 602
With hollow lid
GW 24 612
With stainless steel lid



GW 24 622

FLUSH-MOUNTING BOXES FOR MASONRY WALLS

TECHNICAL CHARACTERISTICS

Standard: IEC 60670-1; EN 60670-1;

Degree of protection: IP40

Installation temperature: max. +60°C; min. -15°C

Material: GW PLAST technopolymer, halogen-free in accordance with EN 60754-2 (CEI EN 50267-2-2)

Impact resistance: IK 07

Heat resistance: thermo-pressure with ball 70°C

Resistance to abnormal heat and fire: Glow wire test 650°C

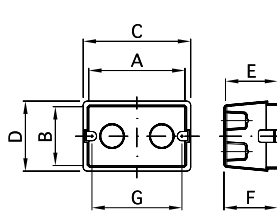
Installation: for masonry walls

BEHAVIOUR WITH CHEMICAL AND ATMOSPHERIC AGENTS

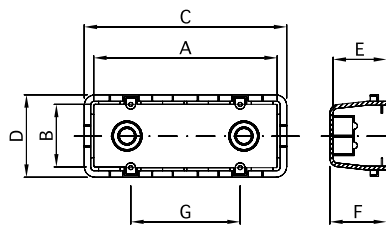
Saline solution	Acids		Bases		Solvents				Mineral oil	UV rays
	Concentrated	Diluted	Concentrated	Diluted	Hexane	Benzol	Acetone	Ethyl alcohol		
Resistant	Not resistant	Not resistant	Limited resistance	Limited resistance	Not resistant	Not resistant	Not resistant	Limited resistance	Limited resistance	Limited resistance

Dimension tables

FLUSH-MOUNTING BOXES



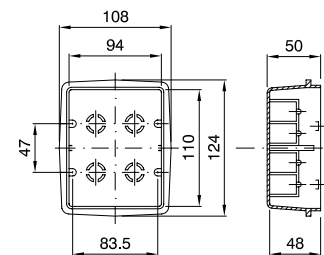
3 gang GW 24 403
4 gang GW 24 404



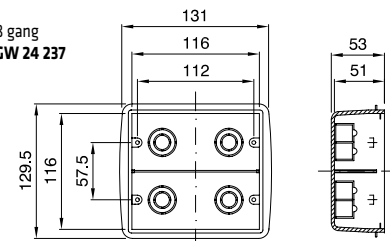
6/7 gang
GW 24 406

Code	GW 24 403	GW 24 404	GW 24 406
	3 gang BIG BOX	4 gang BIG BOX	6/7 gang BIG BOX
A	96	121	171
B	58	58	60
C	119	144	194
D	80	85	90
E	49	49	49
F	50.5	50.5	50.5
G	83.5	108.5	100

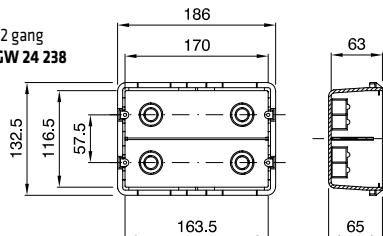
6 gang
GW 24 206



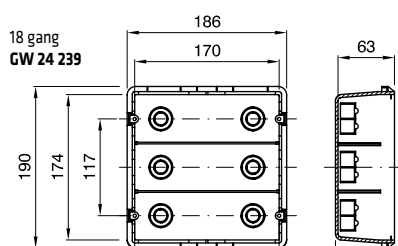
8 gang
GW 24 237



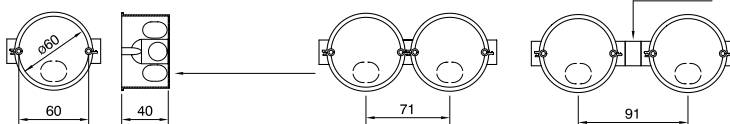
12 gang
GW 24 238



18 gang
GW 24 239

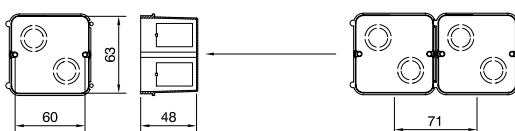


ROUND
GW 24 232



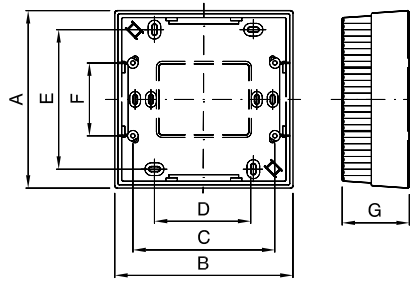
GW 24 233

SQUARE
GW 24 231



PLAYBUS WALL-MOUNTING BOXES

GW 32 431 - GW 32 432
GW 32 436 - GW 32 437

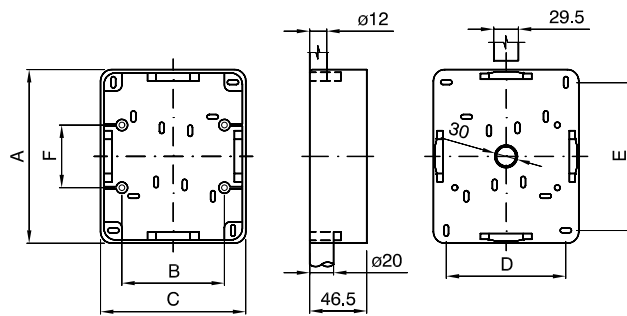


Code	GW 32 431 GW 32 432	GW 32 436 GW 32 437
	3 GANG	4+4 GANG
A	80	140
B	116	140.6
C	83.5	108.5
D	90	78
E	50	110
F	-	57.5
G	50	53

Screw tightening torque: 0,8 Nm

COMPACT WALL-MOUNTING BOXES

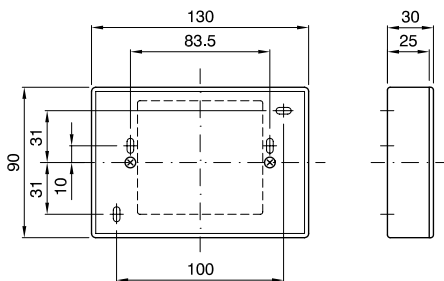
GW 24 006
GW 24 007



Code	GW 24 006	GW 24 007
	3 GANG	3+3 GANG
A	83	136
B	83.5	83.5
C	113	113
D	96	96
E	65	119
F	-	51

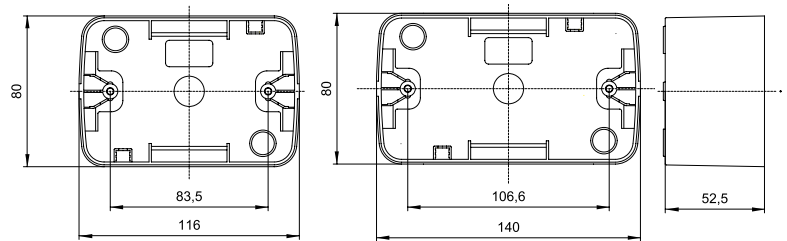
Screw tightening torque: 0,8 Nm

DEEP LIDS



GW 24 227
GW 24 228

TOP SYSTEM WALL-MOUNTING BOXES

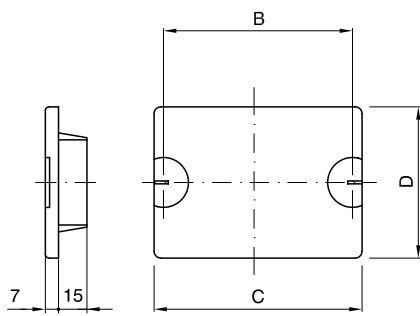


GW 22 471

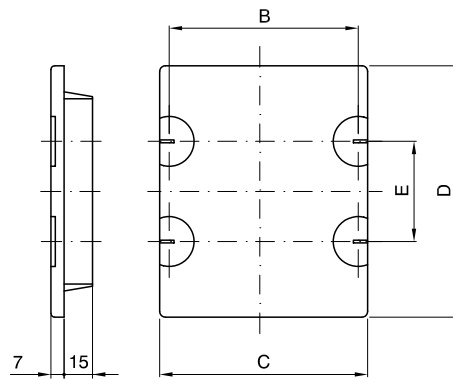
GW 22 472

Screw tightening torque: 0,8 Nm

BLANK PLATES



GW 24 211 - GW 24 212
GW 24 213 - GW 24 214



GW 24 215 - GW 24 216

Code	GW 24 211 GW 24 212	GW 24 213 GW 24 214	GW 24 215 GW 24 216
	3 GANG	4 GANG	3+3 GANG
B	83.5	108.5	83.5
C	110	134	110
D	80	80	133
E	-	-	51