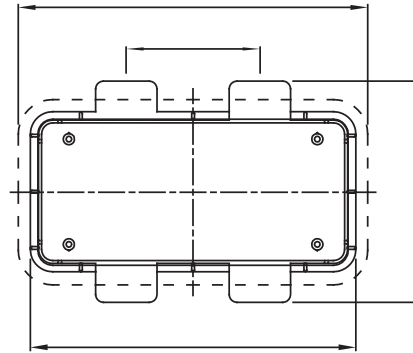
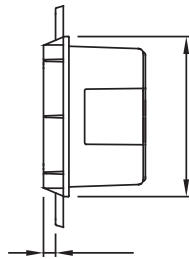
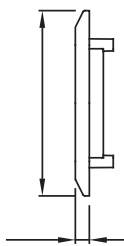


For walls	Plasterboard	Houseable interloc. socket	1
IP degree	IP55	Mechanical resistance	IK08
Houseable IB socket-outlets	16/32 A SBF / CBF / Automatika	Electrocod	2220
Glow wire test	850 °C (bottom) - 650 °C (frame)	Drilling bottom	Through multidiameter cutter
Minimum installation temperature	-15°C		

### DIMENSIONAL

49  
5

32



### TECHNICAL SYMBOLOGY

**IP**

**IK**

**GWT**

IP55

IK08

850 °C (bottom) -  
650 °C (frame)

### STANDARDS/APPROVALS

