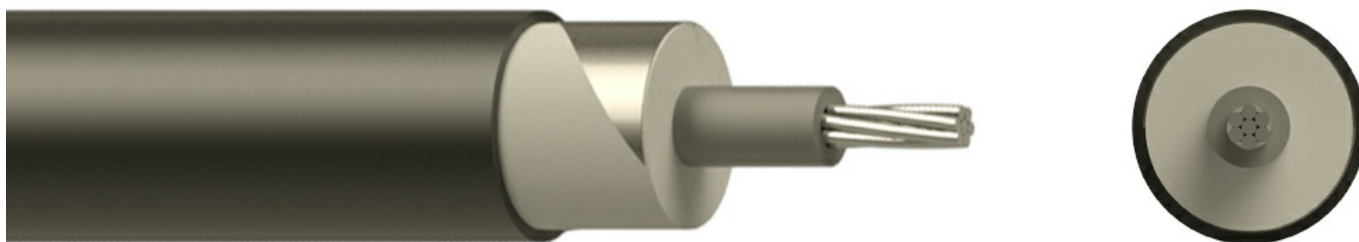


NA2XBY 1x70 CL-2 RM 0.6/1kV



Description

NA2XBY is a cable for indoor and outdoor installation, in cable trays, in ducts or direct buried. It is used for residential or industrial application, in harsh environments where a high level mechanical protection is required.

Core Identification

- 1 core: Black
- 2 core: Blue, Brown
- 3 core: Green/Yellow, Blue, Brown
- 3 core: Brown, Black, Grey
- 4 core: Green/Yellow, Brown, Black, Grey
- 4 core: Brown, Black, Grey, Blue
- 5 core: Green/Yellow, Blue, Brown, Black, Grey
- 6 core and above: Black with White numbers, Green/Yellow

Standards

- IEC 60502-1
- IEC/EN 60228
- VDE 0276-603
- IEC/EN 60332-1-2
- EN 60332-3-24

Construction

- Conductor:** Class 2 stranded aluminium
- Insulation:** XLPE
- Filler:** PVC
- Aarmor:** Galvanized steel tape
- Outer Sheath:** PVC

The above design is only a sample of the options available, for reference purposes only. Our policy of continuous improvement may result in a change of specifications without notice. If any discrepancies might be between the data sheet values and standards, we reserve the rights to make technical changes. Our company will not be held responsible, as all or any of pictures, drawings, weights and dimensions details or other elements in this document are only indicative and must not be considered contractual. Contact our sales team for other specifications or custom made products.

Specifications

Cable Type	Single Core
Cable Overall Diameter	18.6
Cable Weight	557
Conductor Material	Aluminium
Number of Conductors	1
Conductor Cross-Section	70
Conductor Weight	595
Conductor Class	CL-2
Conductor Type	RM
Aarmor	Steel Tape
Insulation Material	XLPE
Filling Material	PE
Outersheath Material	PVC
Rated Voltage (Uo/U)	0.6/1
Max. Permissible Operating Temperature	-5 >< +90
Working Temperature	-40 >< +90
Short Circuit Temperature	250
Minimum Bending Radius (Installing)	15xD
Minimum Bending Radius (Operating)	12xD
Packing	Wooden Drum, Plywood Drum, Coil, Rolls
Delivery Lengths	To be confirmed by offer
Delivery Length Tolerance	±5%

The above design is only a sample of the options available, for reference purposes only. Our policy of continuous improvement may result in a change of specifications without notice. If any discrepancies might be between the data sheet values and standards, we reserve the rights to make technical changes. Our company will not be held responsible, as all or any of pictures, drawings, weights and dimensions details or other elements in this document are only indicative and must not be considered contractual. Contact our sales team for other specifications or custom made products.