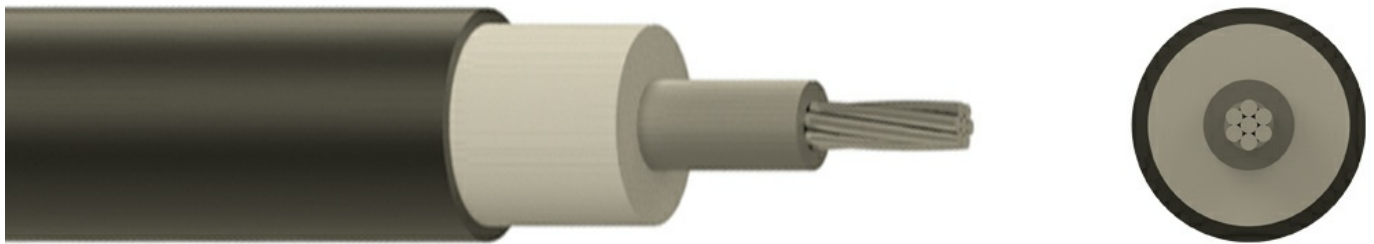


## NA2XY 1x16 CL-2 RM 0.6/1kV



### Description

NA2XY is used for electricity supply in low voltage installation systems. It is well adapted to underground use in industrial applications with an additional mechanical protection. For fixed installations, in indoor areas (trays, ducts), in underground ducts or buried direct in ground, in dry or wet locations.

### Core Identification

- 1 core: Black
- 2 core: Blue, Brown
- 3 core: Green/Yellow, Blue, Brown
- 3 core: Brown, Black, Grey
- 4 core: Green/Yellow, Brown, Black, Grey
- 4 core: Brown, Black, Grey, Blue
- 5 core: Green/Yellow, Blue, Brown, Black, Grey
- 6 core and above: Black with White numbers, Green/Yellow

### Standards

- IEC 60332-1-2
- IEC 60502-1
- VDE 0276-603
- IEC 60228

### Construction

- Conductor:** Class 2 stranded aluminum
- Insulation:** XLPE
- Sheath:** PVC

The above design is only a sample of the options available, for reference purposes only. Our policy of continuous improvement may result in a change of specifications without notice. If any discrepancies might be between the data sheet values and standards, we reserve the rights to make technical changes. Our company will not be held responsible, as all or any of pictures, drawings, weights and dimensions details or other elements in this document are only indicative and must not be considered contractual. Contact our sales team for other specifications or custom made products.

## Specifications

|  |  |
|--|--|
| Cable Type                             | Single Core                            |
| Cable Overall Diameter                 | 9.7                                    |
| Cable Weight                           | 113                                    |
| Conductor Material                     | Aluminium                              |
| Number of Conductors                   | 1                                      |
| Conductor Cross-Section                | 16                                     |
| Conductor Weight                       | 40.2                                   |
| Conductor Class                        | CL-2                                   |
| Conductor Type                         | RM                                     |
| Insulation Material                    | XLPE                                   |
| Filling Material                       | PE                                     |
| Outersheath Material                   | PVC                                    |
| Rated Voltage (Uo/U)                   | 0.6/1                                  |
| Max. Permissible Operating Temperature | -30 >< +90                             |
| Working Temperature                    | -40 >< +90                             |
| Short Circuit Temperature              | 250                                    |
| Minimum Bending Radius (Installing)    | 15xD                                   |
| Minimum Bending Radius (Operating)     | 13xD                                   |
| Packing                                | Wooden Drum, Plywood Drum, Coil, Rolls |
| Delivery Lengths                       | To be confirmed by offer               |
| Delivery Length Tolerance              | ±5%                                    |

The above design is only a sample of the options available, for reference purposes only. Our policy of continuous improvement may result in a change of specifications without notice. If any discrepancies might be between the data sheet values and standards, we reserve the rights to make technical changes. Our company will not be held responsible, as all or any of pictures, drawings, weights and dimensions details or other elements in this document are only indicative and must not be considered contractual. Contact our sales team for other specifications or custom made products.