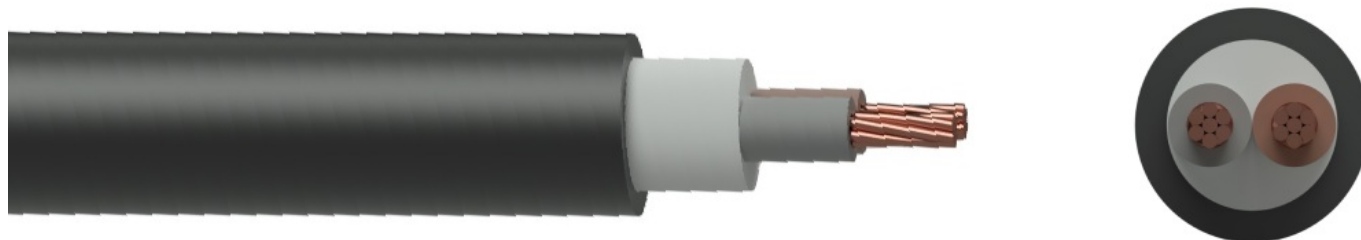


N2XY 2x25 CL-2 RM 0.6/1kV



Description

N2XY it is used for electricity supply in low voltage installation systems. It is well adapted to underground use in industrial applications with an additional mechanical protection. For fixed installations, in indoor areas (trays, ducts), in underground ducts or buried direct in ground, in dry or wet locations.

Core Identification

- 1 core: Black
- 2 core: Blue, Brown
- 3 core: Green/Yellow, Blue, Brown
- 3 core: Brown, Black, Grey
- 4 core: Green/Yellow, Brown, Black, Grey
- 4 core: Brown, Black, Grey, Blue
- 5 core: Green/Yellow, Blue, Brown, Black, Grey
- 6 core and above: Black with White numbers, Green/Yellow

Standards

- IEC 60332-1-2
- IEC 60502-1
- VDE 0276-603
- IEC 60228

Construction

- Conductor:** Class 1 or Class 2 Copper
- Insulation:** XLPE
- Bedding:** PVC
- Sheath:** PVC

The above design is only a sample of the options available, for reference purposes only. Our policy of continuous improvement may result in a change of specifications without notice. If any discrepancies might be between the data sheet values and standards, we reserve the rights to make technical changes. Our company will not be held responsible, as all or any of pictures, drawings, weights and dimensions details or other elements in this document are only indicative and must not be considered contractual. Contact our sales team for other specifications or custom made products.

Specifications

Cable Type	Multi Core
Cable Overall Diameter	19.2 mm
Cable Weight	798.0 kg/km
Conductor Material	Copper
Number of Conductors	2.0
Conductor Cross-Section	25.0 mm ²
Conductor Weight	410.0 kg/km
Conductor Class	CL-2
Conductor Type	RM
Insulation Material	XLPE
Filling Material	PVC
Outersheath Material	PVC
Rated Voltage (U ₀ /U)	0.6/1 kV
Max. Permissible Operating Temperature	-15 >< +90 °C
Working Temperature	-15 >< +90 °C
Short Circuit Temperature	250.0 °C
Minimum Bending Radius (Installing)	6xD
Minimum Bending Radius (Operating)	4xD
Packing	Wooden Drum, Plywood Drum, Coil, Rolls
Delivery Lengths	To be confirmed by offer
Delivery Length Tolerance	±5%

The above design is only a sample of the options available, for reference purposes only. Our policy of continuous improvement may result in a change of specifications without notice. If any discrepancies might be between the data sheet values and standards, we reserve the rights to make technical changes. Our company will not be held responsible, as all or any of pictures, drawings, weights and dimensions details or other elements in this document are only indicative and must not be considered contractual. Contact our sales team for other specifications or custom made products.