

GE10012KF

PN: BTVGCAHOCHOKFCW01B
EAN: 6422956013424

Specifications

Battery Model	GE10012KF
Voltage	12V
Power (1.65V/cell@15min)	300.6W/cell
Type	Valve regulated lead-acid (VRLA), 6 cell, GEL - maintenance free
Designed Floating Life	Up to 9 years (25°C)
Nominal Operating Temp. Range	25°C ± 3°C
Terminal	T11(M8)
Construction	
Container & Cover	ABS
Safety valve	EPDR
Terminal	Copper
Self Discharge (25°C)	after 3 month storage 92% after 6 month storage 84%
Capacity affected by temperature	
40°C	103%
25°C	100%
0°C	90%
Charge Voltage (25°C)	
Cycle use	13.5V ~ 13.8V max. Current: 30A
Float use	13.5V~13.8V
Internal resistance	6 mΩ
Physical	
Without Terminal	330 x 170 x 210 mm
With Terminal	330 x 172 x 214 mm
Product Weight	29.2 Kg



Completely sealed and maintenance-free



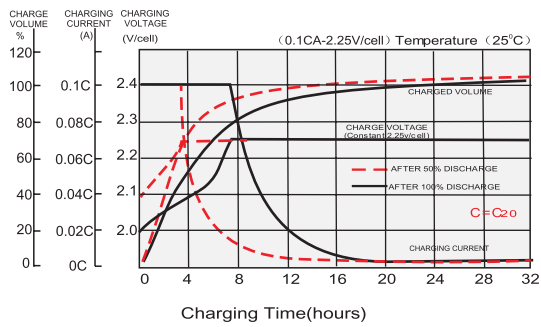
Excellent charging and re-charging



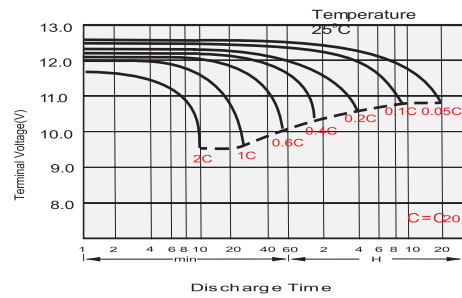
Long Life & low self-discharge design

- Gel deep cycle technology
- Excellent charging and re-charging
- Stable and reliable for long-term
- Low self-discharge
- Floating & standby use: up to 9 years
- More than 400 cycles at 100% DOD
- Multiple Application: Alarm and Security Systems, Cable Television, Communication Equipment, Power Tools, Control Equipment, Medical Equipment, UPS, Toys, Solar Systems

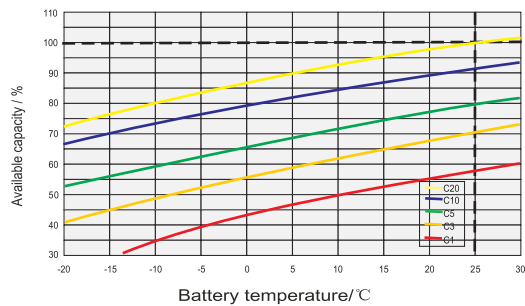
Constant voltage charging characteristic (0.25 CA, at 25° C)



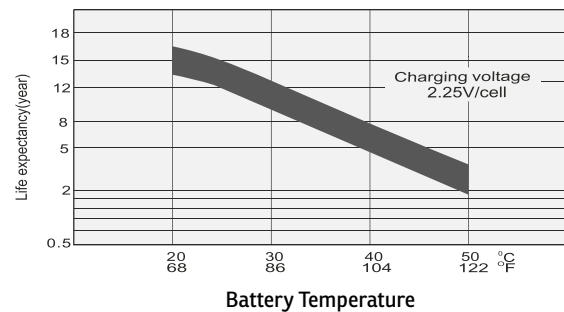
Discharge Characteristics



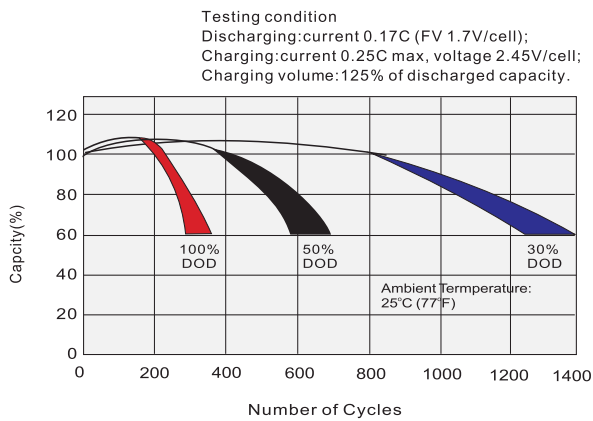
Temperature Effects in Relation to Battery Capacity



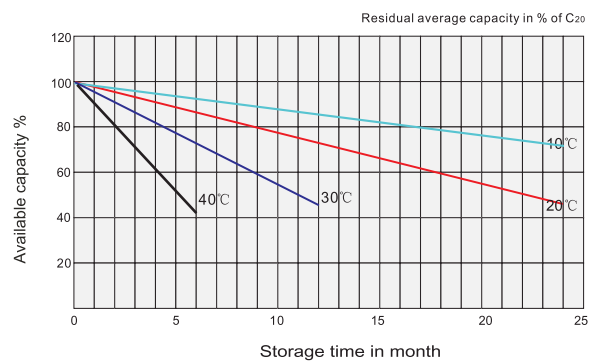
Effect of Temperature on Long Term Float Life



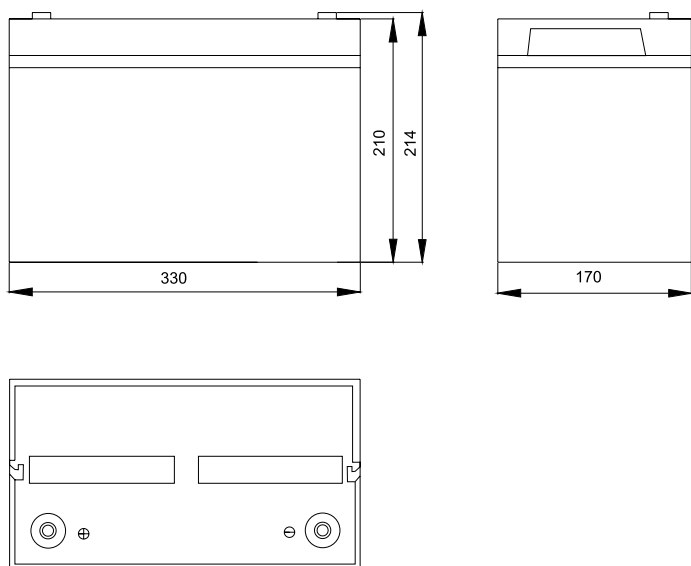
Cycle Life in Relation to Depth of Discharge



Self Discharge Characteristics



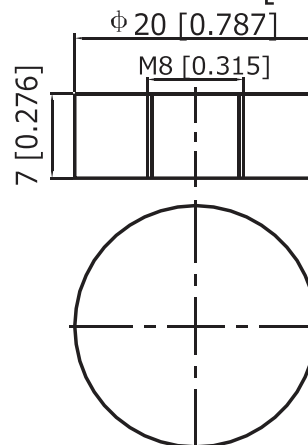
Dimensions (mm)



T11(M8) Terminal Dimensions (mm)

T11/M8 Terminal

Unit: mm [inches]



Constant Current Discharge Characteristics (A), 25°C

F.V/Ti	15min	30min	60min	2Hr	3Hr	4Hr	5Hr	10Hr	20Hr
1.80V/cell	144.5	89.5	55.3	34.1	25.0	19.1	15.8	10.0	5.30
1.75V/cell	153.8	93.2	55.3	35.3	25.3	19.4	16.2	10.1	5.34
1.70V/cell	158.3	95.4	57.1	35.8	25.6	19.8	16.4	10.1	5.37
1.65V/cell	164.8	97.9	59.1	36.3	25.8	20.0	16.7	10.2	5.38
1.60V/cell	168.0	100.5	60.0	36.5	26.0	20.3	16.7	10.2	5.40



Constant Wattage Discharge Characteristics (W), 25°C

F.V/Ti	15min	30min	60min	2Hr	3Hr	4Hr	5Hr	10Hr	20Hr
1.80V/cell	246.8	184.2	103.9	63.0	47.5	36.2	31.2	19.8	10.6
1.75V/cell	279.5	198.5	107.0	64.0	48.1	37.7	31.5	20.0	10.6
1.70V/cell	303.3	207.0	107.9	64.1	48.2	37.8	31.6	20.1	10.7
1.65V/cell	300.6	184.2	109.1	64.7	48.2	38.0	31.7	20.2	10.8
1.60V/cell	307.3	187.4	109.6	65.0	47.4	38.0	31.7	20.3	10.8



Logistics

Carton Box Size	345 x 182 x 275 mm
Pieces in the Carton Box	1 pc / ctn
Net & Gross weight / CTN	N.W. / G.W.: 29.2 kg / 30.8 kg

