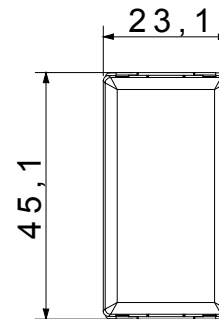
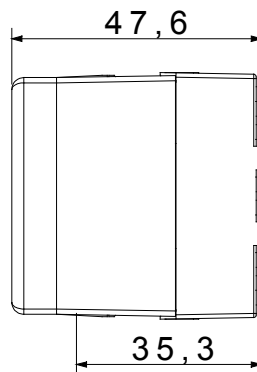
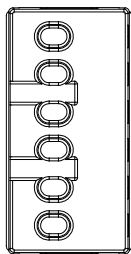




The System modular devices allow the creation of infinite combinations of devices and plates, through a complete range that covers all design, functional and installation needs. Colours and finishes: satin black, elegant and classy. The range includes control units, socket-outlets, breakers, indicators, connectors and devices for the control, safety and comfort of your home.

Categorie	Releu	Contacte ieşire	10 AX 250V c.a.
Descriere	Pas-pas 1P	Culoare	Negru
Nr. poli	1	Tensiune	230 V
Standard	EN 60669-1 / EN 60669-2-2	Frecvenţă	50Hz
Rezistenţa la tensiunea de test	2000 V la 50 Hz timp de 1 minut	Rezistenţa izolaţiei	>5 MOhm
Borne de cablare	Conţinut	Comutator de funcţionare prelungit (nr. de modificări)	10 poziţii
Termo-presiune cu bilă	125 °C	Test de încercare cu fir incandescent	250 V c.a. cosφ=0,6
Prinderea bornei la tracţiunea cablului	> 50 N	Capacitate de strângere borne cabluri torsadate (mm²)	1x4 / 2x2,5
Capacitate de strângere a bornelor cabluri solide (mm²)	2x2,5	Nr. Module DE SISTEM	1
Putere nominală	0 VA	Putere nominală (AC15)	0 VA
Lămpi incandescente/cu halogen 230V	800 W	Lămpi fluorescente cu balast electronic	400 W
Lămpi fluorescente cu balast compensat	360 W	Lămpi	200 W
Lămpi cu LED-uri	200 W	Lămpi cu halogen/LED cu transformator electronic	200 W
Lămpi cu halogen/LED cu transformator electromecanic	400 W	Material	Tehnopolimer
Electrocod	140		

DIMENSIONAL



TECHNICAL SYMBOLOGY



STANDARDS/APPROVALS

