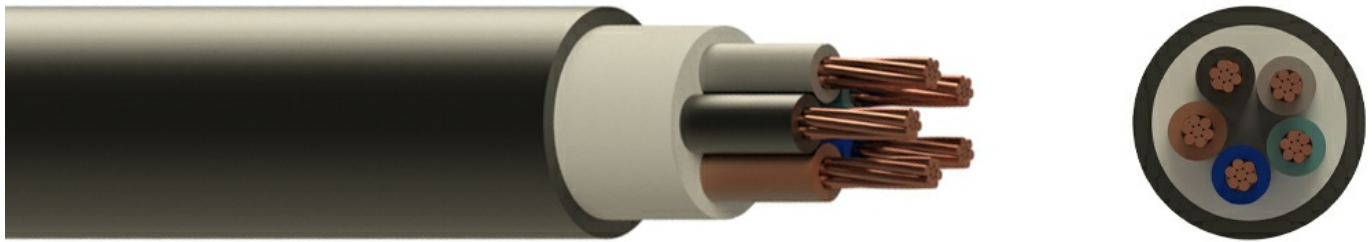


N2XH 5x4 CL-2 RM 0.6/1kV



Description

N2XH it is a cable that can be used for electricity supply in low voltage installation system, in private or public buildings. It is well adapted to underground use in industrial applications with an additional mechanical protection. Can be laid in wet environments, but not directly in the water or direct buried. This cable type does not release toxic or corrosive fumes during combustions and have low smoke halogen free emission.

Standards

EN 60228
 EN 62230
 IEC 60364
 IEC 60332-3-24
 IEC 60332-1-2
 IEC 61034-1/2
 IEC 60754-1/2
 EN 50266-2-4

Core Identification

1 core: Black
 2 core: Blue, Brown
 3 core: Green/Yellow, Blue, Brown
 3 core: Brown, Black, Grey
 4 core: Green/Yellow, Brown, Black, Grey
 4 core: Brown, Black, Grey, Blue
 5 core: Green/Yellow, Blue, Brown, Black, Grey
 6 core and above: Black with White numbers, Green/Yellow

Construction

Conductor: Class 1 solid copper < 16mm²
Conductor: Class 2 stranded copper > 16mm²
Insulation: XLPE
Bedding: LSZH-FRNC
Sheath: LSZH-FRNC

The above design is only a sample of the options available, for reference purposes only. Our policy of continuous improvement may result in a change of specifications without notice. If any discrepancies might be between the data sheet values and standards, we reserve the rights to make technical changes. Our company will not be held responsible, as all or any of pictures, drawings, weights and dimensions details or other elements in this document are only indicative and must not be considered contractual. Contact our sales team for other specifications or custom made products.

Specifications

Cable Type	Multi Core
Cable Overall Diameter	13.5
Cable Weight	343.6
Conductor Material	Copper
Number of Conductors	5
Conductor Cross-Section	4
Conductor Weight	173.1
Conductor Class	CL-2
Conductor Type	RM
Insulation Material	XLPE
Filling Material	PE
Outersheath Material	LSZH
Rated Voltage (Uo/U)	0.6/1
Max. Permissible Operating Temperature	-40 >< +90
Working Temperature	-40 >< +90
Short Circuit Temperature	250
Minimum Bending Radius (Installing)	6xD
Minimum Bending Radius (Operating)	6xD
Packing	Wooden Drum, Plywood Drum, Coil, Rolls
Delivery Lengths	To be confirmed by offer
Delivery Length Tolerance	±5%

The above design is only a sample of the options available, for reference purposes only. Our policy of continuous improvement may result in a change of specifications without notice. If any discrepancies might be between the data sheet values and standards, we reserve the rights to make technical changes. Our company will not be held responsible, as all or any of pictures, drawings, weights and dimensions details or other elements in this document are only indicative and must not be considered contractual. Contact our sales team for other specifications or custom made products.