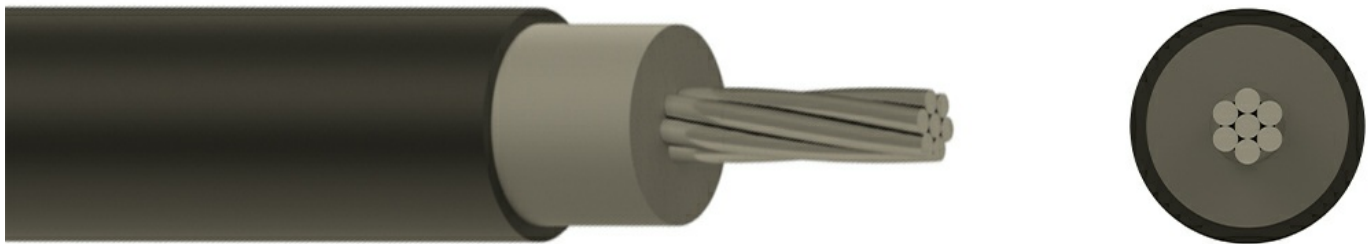


NA2XY 1X120 CL-2 RM 1.8/3kV



Description

NA2XY is used for electricity supply in low voltage installation systems. It is well adapted to underground use in industrial applications with an additional mechanical protection. For fixed installations, in indoor areas (trays, ducts), in underground ducts or buried direct in ground, in dry or wet locations.

Core Identification

- 1 core: Black
- 2 core: Blue, Brown
- 3 core: Green/Yellow, Blue, Brown
- 3 core: Brown, Black, Grey
- 4 core: Green/Yellow, Brown, Black, Grey
- 4 core: Brown, Black, Grey, Blue
- 5 core: Green/Yellow, Blue, Brown, Black, Grey
- 6 core and above: Black with White numbers, Green/Yellow

Standards

- IEC 60332-1-2
- IEC 60502-1
- VDE 0276-603
- IEC 60228

Construction

- Conductor:** Class 2 stranded aluminum
- Insulation:** XLPE (DIX 3)
- Sheath:** PVC (DMV 6), UV Resistant

The above design is only a sample of the options available, for reference purposes only. Our policy of continuous improvement may result in a change of specifications without notice. If any discrepancies might be between the data sheet values and standards, we reserve the rights to make technical changes. Our company will not be held responsible, as all or any of pictures, drawings, weights and dimensions details or other elements in this document are only indicative and must not be considered contractual. Contact our sales team for other specifications or custom made products.

Specifications

Cable Type	Single Core
Cable Overall Diameter	20.7 mm
Cable Weight	530 kg/km
Conductor Material	Aluminium
Number of Conductors	1
Conductor Cross-Section	120 mm ²
Conductor Weight	N/A kg/km
Conductor Class	CL-2
Conductor Type	RM
Insulation Material	XLPE
Filling Material	N/A
Outersheath Material	PVC
Rated Voltage (U ₀ /U)	1.8/3 kV
Max. Permissible Operating Temperature	-30 >< +90 °C
Working Temperature	-40 >< +90 °C
Short Circuit Temperature	250 °C
Minimum Bending Radius (Installing)	15xD
Minimum Bending Radius (Operating)	13xD
Packing	Wooden Drum
Delivery Lengths	To be confirmed by offer
Delivery Length Tolerance	±5%

The above design is only a sample of the options available, for reference purposes only. Our policy of continuous improvement may result in a change of specifications without notice. If any discrepancies might be between the data sheet values and standards, we reserve the rights to make technical changes. Our company will not be held responsible, as all or any of pictures, drawings, weights and dimensions details or other elements in this document are only indicative and must not be considered contractual. Contact our sales team for other specifications or custom made products.