

Deutsche
Qualität
Garantiert



110

HALF
CELLS

210
mm

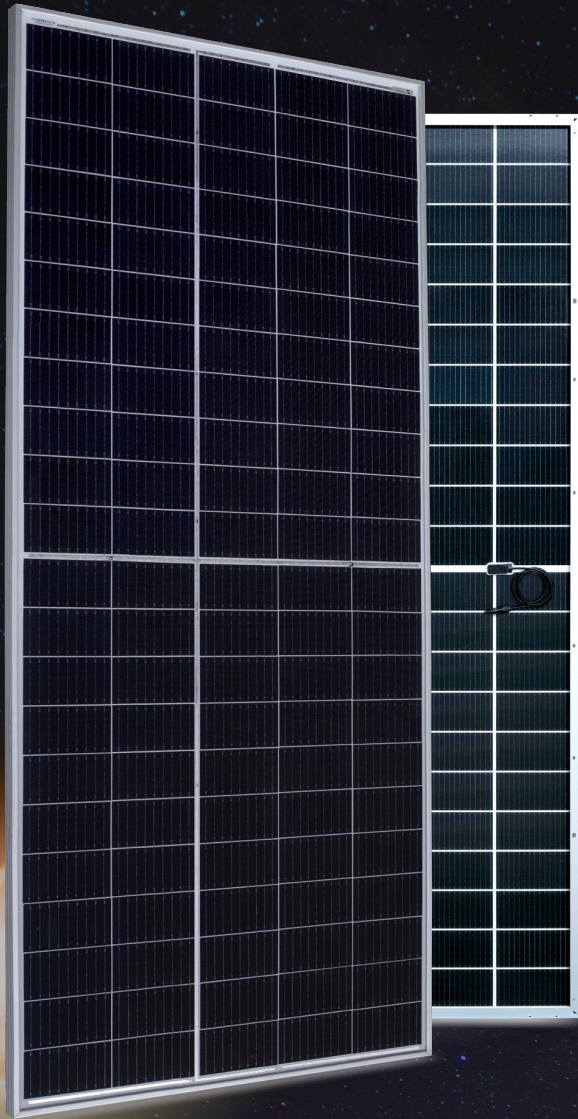
CELL
SIZE



LID
RESISTANT



HIGHLY STABLE
AND TOUGH



ENRICH YOUR
ENERGY YIELD

30

years
Performance
Guarantee

15

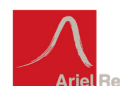
years
Product
Warranty

SILICON HETEROJUNCTION PV MODULES
HALF-CUT CELLS • BIFACIAL • DOUBLE-GLASS

560W-580W
AE TME-110BDS Series



IEC 61215
IEC 61730
Regular Production Surveillance
Type Tested and Monitored



www.ae-solar.com

Mechanical and design specification

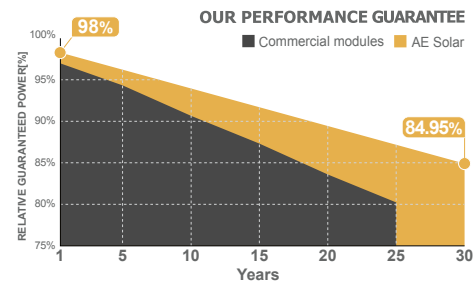
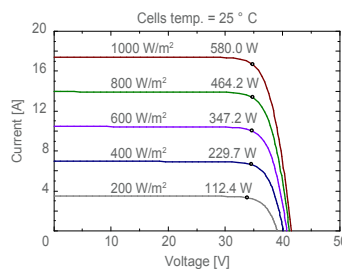
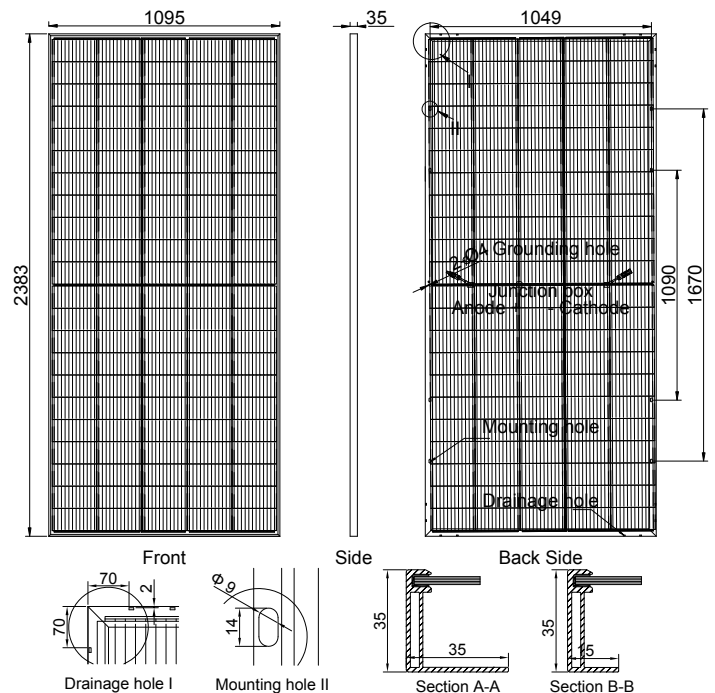
Cell type	Silicon Heterojunction Technology, Half-cut cells, 210 mm
No. of cells	110
Bifaciality	80±5%
Glass	2.0 mm, high transmission, AR coated, tempered
Encapsulation	POE
Back cover	2.0 mm, high transmission solar glass, tempered
Junction box	IP 68 rated
Frame	35 mm anodized Aluminium alloy
Cable	1 x 4 mm ² , 200 mm length or customized
Connectors	MC 4 / MC 4 compatible
Dimension	2383 mm x 1095 mm x 35 mm
Weight	32.3 kg
Hail resistance	Max. Ø 25 mm at 23 m/s
Wind load	2400 Pa/ 244 kg/ m ²
Mechanical load	5400 Pa/ 550 kg/ m ²

Packaging information

Packaging configuration	31 pcs / pallet
Loading capacity	620 pcs / 40 HQ
Size / Pallet	1130 mm x 1140 mm x 2500 mm (upright)
Weight	1035 kg / pallet

Temperature ratings

Operating temperature (°C)	-40 to +85
Temp.coefficient of P _{max} (%/°C)	-0.26
Temp.coefficient of V _{oc} (%/°C)	-0.24
Temp.coefficient of I _{sc} (%/°C)	0.04
Nom. operating temp. NOCT (°C)	44 ± 2



Electrical specifications (STC*): AE560TME-110BDS AE565TME-110BDS AE570TME-110BDS AE575TME-110BDS AE580TME-110BDS

Parameter	AE560TME-110BDS	AE565TME-110BDS	AE570TME-110BDS	AE575TME-110BDS	AE580TME-110BDS	
Nominal Max. Power	P _{max} (Wp)	560	565	570	575	580
Maximum operating voltage	V _{MPP} (V)	34.17	34.35	34.53	34.71	34.88
Maximum operating current	I _{MPP} (A)	16.39	16.45	16.51	16.57	16.63
Open-circuit voltage	V _{oc} (V)	40.77	40.96	41.16	41.35	41.54
Short-circuit current	I _{sc} (A)	17.19	17.25	17.31	17.37	17.43
Module efficiency	η (%)	21.46	21.65	21.84	22.04	22.23
Power tolerance	(W)	0~+5				
Maximum system Voltage	(V)	1500				
Maximum series fuse rating	(A)	30				

*STC: Standard test conditions (Irradiance 1000 W/m², Cell temperature 25°C and air mass of AM1.5)

Electrical specifications (NMOT*): AE560TME-110BDS AE565TME-110BDS AE570TME-110BDS AE575TME-110BDS AE580TME-110BDS

Parameter	AE560TME-110BDS	AE565TME-110BDS	AE570TME-110BDS	AE575TME-110BDS	AE580TME-110BDS	
Nominal Max. Power	P _{max} (Wp)	420	423	427	431	435
Maximum operating voltage	V _{MPP} (V)	32.03	32.20	32.37	32.53	32.70
Maximum operating current	I _{MPP} (A)	13.11	13.16	13.21	13.26	13.30
Open-circuit voltage	V _{oc} (V)	38.18	38.38	38.59	38.79	39.00
Short-circuit current	I _{sc} (A)	13.75	13.80	13.85	13.90	13.94

*NMOT: Normal Module Operating Temperature (Irradiance 800 W/m², Ambient temperature 20°C, air mass of AM1.5 and wind speed of 1 m/s)

The specifications and characteristics contained in this datasheet may deviate slightly from our actual products due to the product developments and uncertainty of measurement devices. The specifications included in the datasheet are subject to change without prior notice.